

Eligible Segment Maps

Highlighted sections indicate eligible segments and locations in which bids will be accepted.

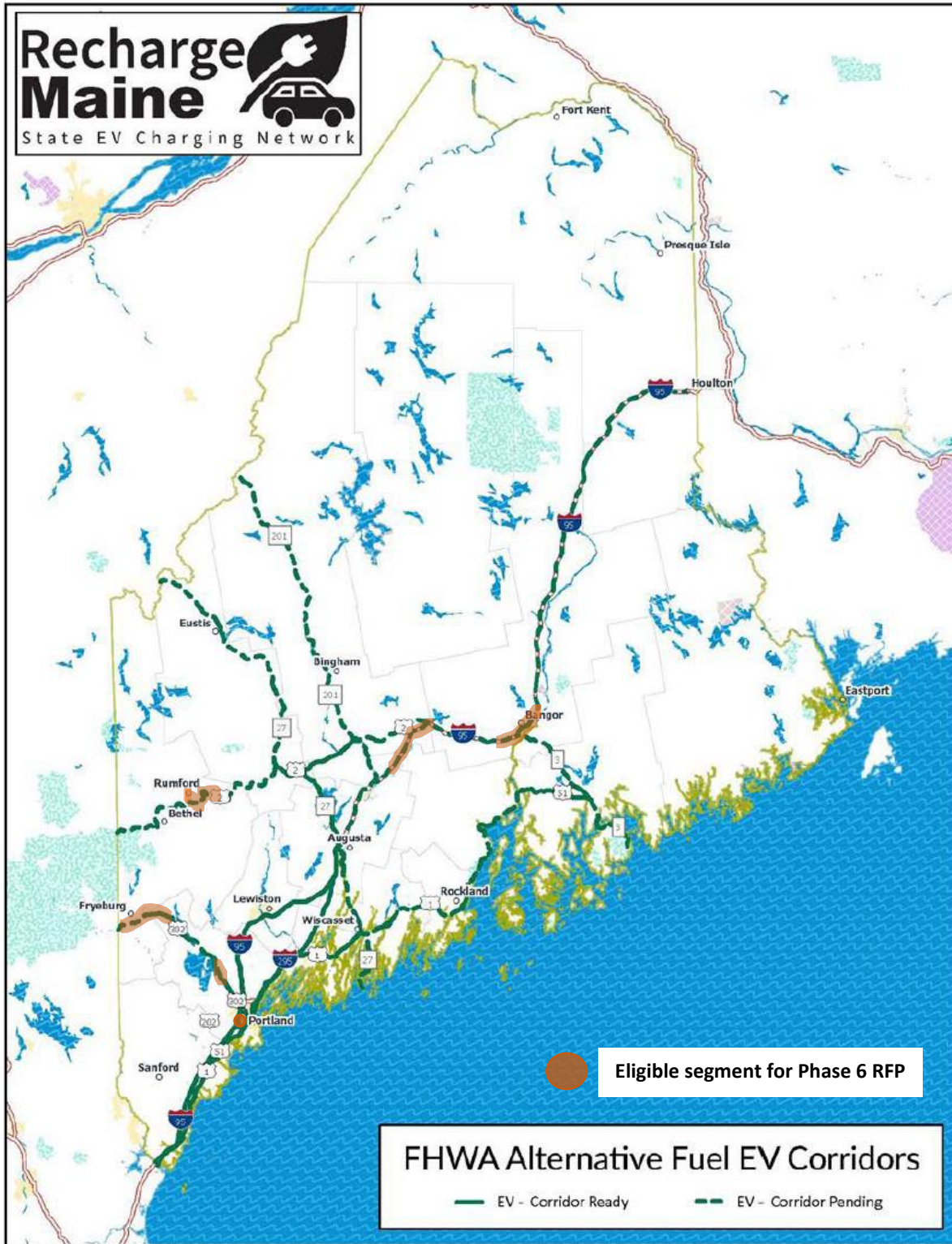
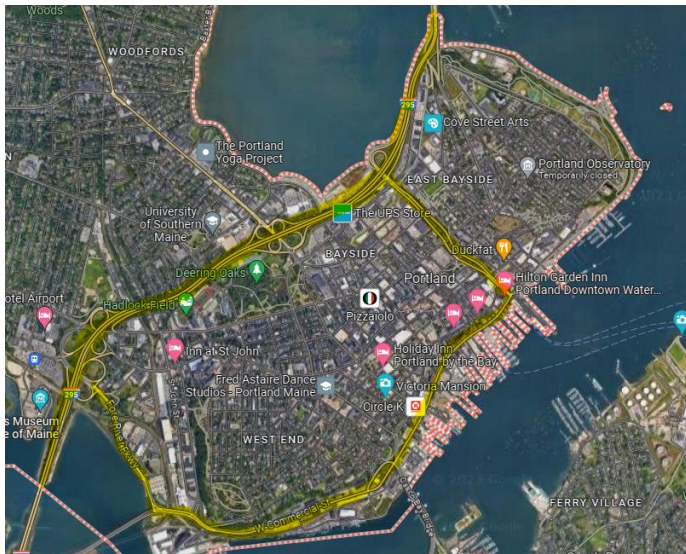


Figure Note: Tesla Superchargers not included.

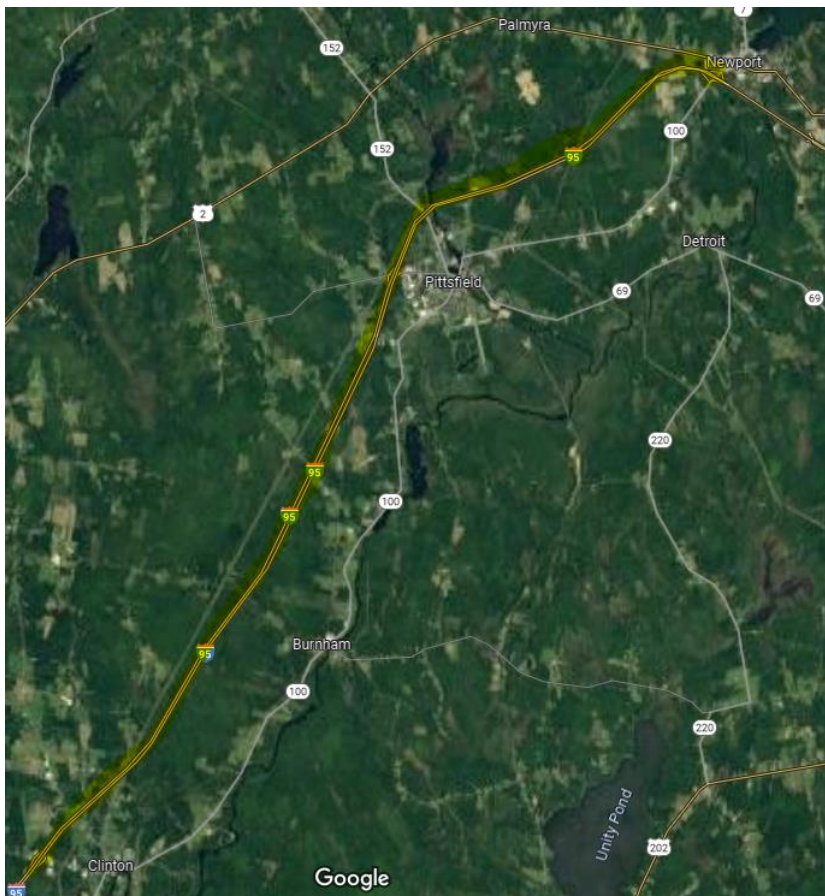
RFP-EM-010-2024
Electric Vehicle DC Fast Charging Stations – Phase 6
Attachment C



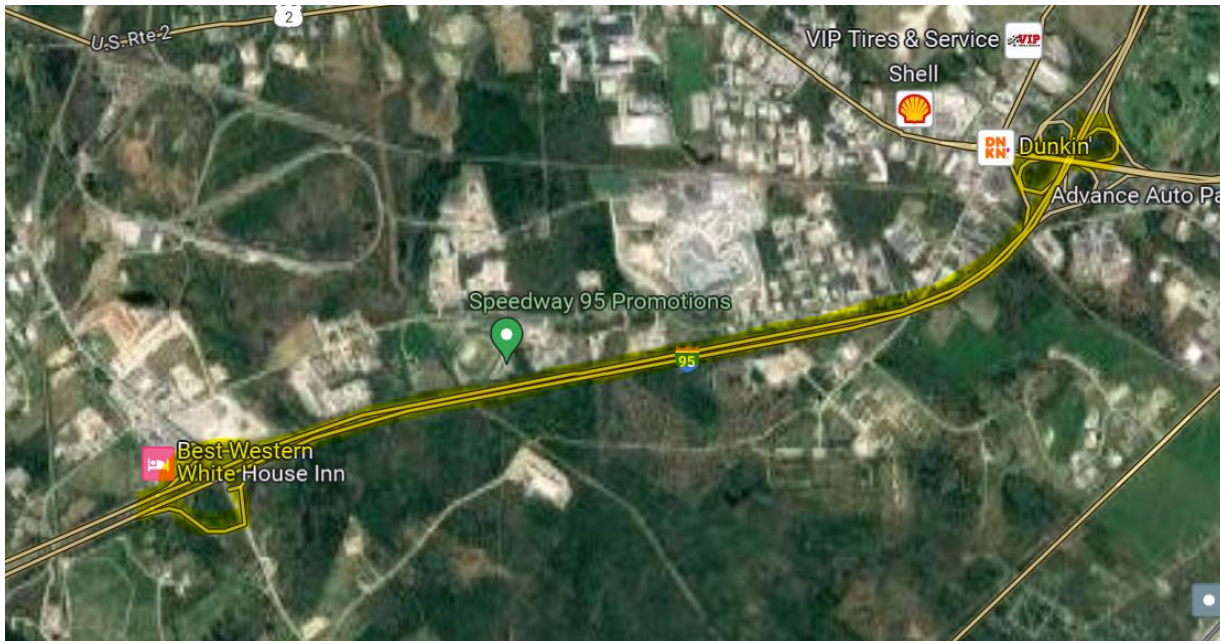
Eligible Segment #1 – I-295 from Exit 5/5A to Exit 8 and US Route 1A in Portland



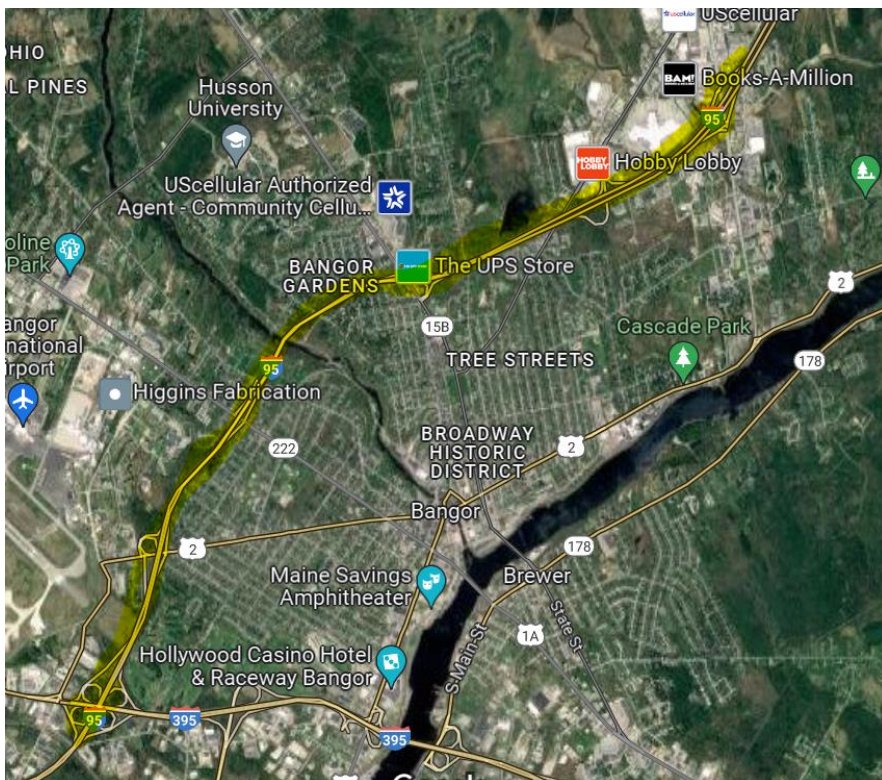
Eligible Segment #2 – I-95 from Exit 138 in Clinton to Exit 157 in Newport



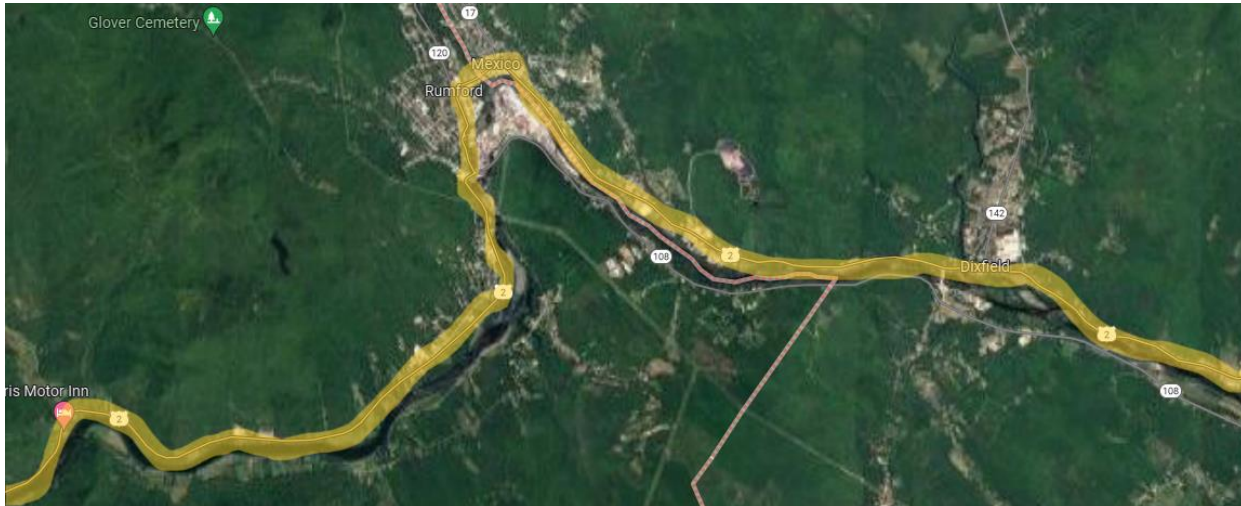
Eligible Segment #3 – I-95 from 180 in Hampden to Exit 182 A/B in Bangor



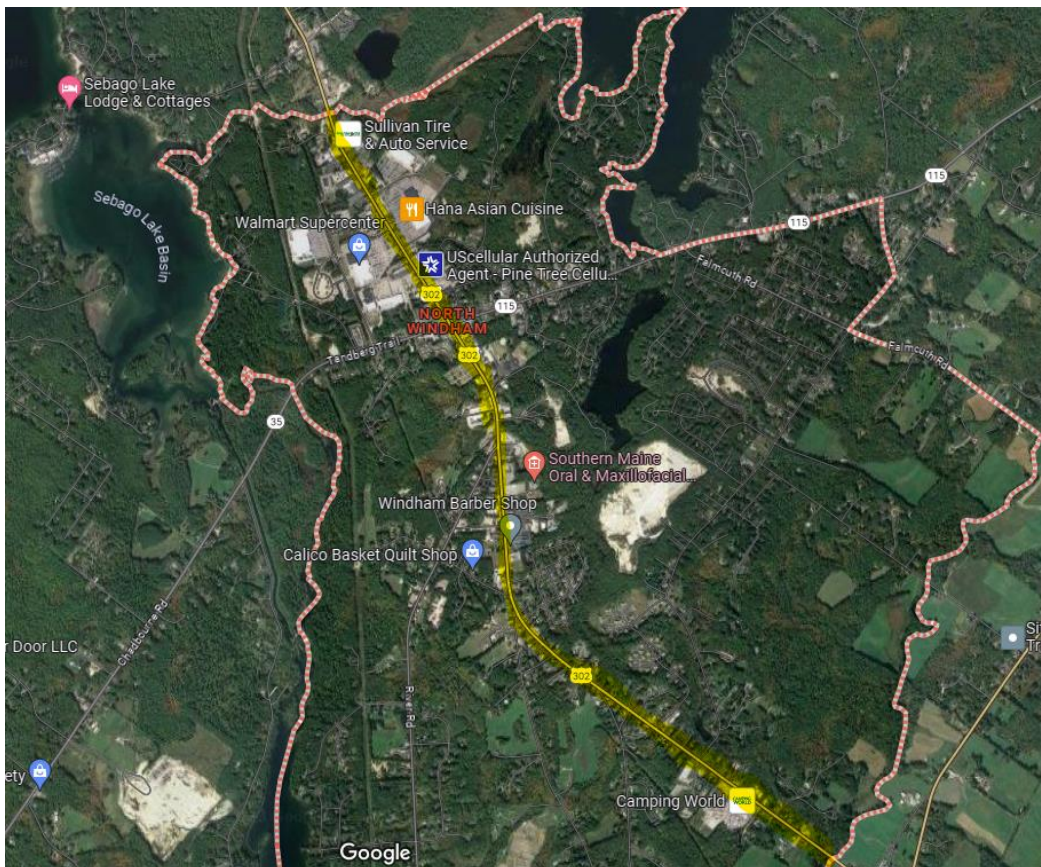
Eligible Segment #4 – I-95 from 182 A/B in Bangor to Exit 187 in Bangor



Eligible Segment #5 – US Route 2 from Rumford to Dixfield



Eligible Segment #6 – US Route 302 in North Windham



Eligible Segment #7 – US Route 302 from Fryeburg to Bridgton

