

**Residential Registered Vendor
Monthly Newsletter
July 26, 2022**



- 1) **Efficiency Maine’s Triennial Plan Funding** – Efficiency Maine has new funding for energy efficiency retrofits, and big goals for heat pumps, heat pump water heaters, and insulation projects. Funding is stable and demand is high.
- 2) **New Low-Income Eligibility** – Households can now qualify for low-income rebates through any of the following pathways:
 - 1. Low Income Home Energy Assistance Program (LIHEAP)
 - 2. Supplemental Nutrition Assistance Program (SNAP) for food assistance
 - 3. Temporary Assistance for Needy Families (TANF) for cash assistance
 - 4. MaineCare for medical insurance coverage
 - 5. Tax Assessed Valuation of Land and Building

Customers can prequalify as low income for up to one year by completing one of the [verification forms available here](#).

- 3) **Tip from the Field** – For multi-zone heat pump systems, testing each indoor unit separately can reduce callbacks due to cross-wiring.
- 4) **Installation Addresses** – To avoid processing delays, please be sure that the installation address is complete and legible.
- 5) **Tool of the Month** – Check out our new online [Brochure Request Form](#). You can now easily request printed brochures and have them mailed to you at no cost.
- 6) **Heat Pump Installation Training Opportunities** – The following courses are being offered by Efficiency Maine Registered Trainers.

Dates	Course Title	Location	Registration Information
8/8/2022 – 8/12/2022	Heat Pump Installer*	Maine Energy Marketer’s Association	Click for course information
8/22/2022 – 8/26/2022	Heat Pump Installer*	Kennebec Valley Community College	Click for course information
9/26/2022 – 9/30/2022	Heat Pump Installer*	Maine Energy Marketer’s Association	Click for course information
12/19/2022 – 12/23/2022	Heat Pump Installer*	Maine Energy Marketer’s Association	Click for course information

* Eligible for [Efficiency Maine scholarship](#) (50% up to \$500)

7) Weatherization Training Opportunities – Build Green Maine is offering BPI Training & Testing classes. If interested, please follow this link to the [BPI course registration](#). You can request a scholarship by filling out this [form](#) from Kennebec Valley Community College (KVCC) or by filling out Efficiency Maine’s scholarship [form](#).

8) Top Insulation Performers (past four months)

1. Horizon Residential Energy Services
2. Evergreen Home Performance
3. Seal It Insulation Systems

9) Top Heat Pump Performers (past four months)

1. Dave’s World
2. Valley Home Services
3. Royal River Heat Pumps

10) Top Low-Income Insulation Performers (past four months)

1. Installations Unlimited
2. New England Spray Foam Insulation
3. CJ Insulation & Subcontractors

11) Top Low-Income Heat Pump Performers (past four months)

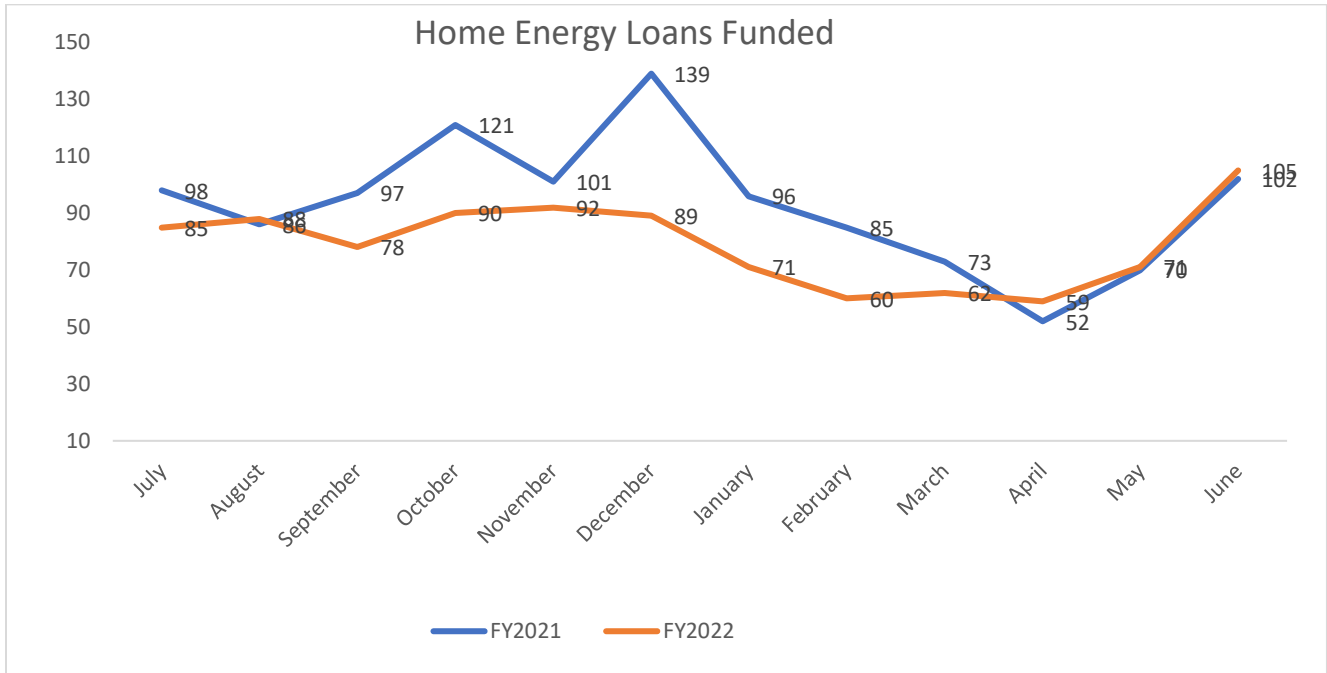
1. Valley Home Services
2. Dave’s World
3. Nicatou Stove Shops

12) Loan Update – June’s 105 loans were 3% above June of last year and fiscal year-to-date loans are down 15% over the last year. If you don't already have a loan portal ID and password, you can reach our financial services provider (NEIF) by calling our Call Center (866-376-2463).

(Program Results follow on next page)

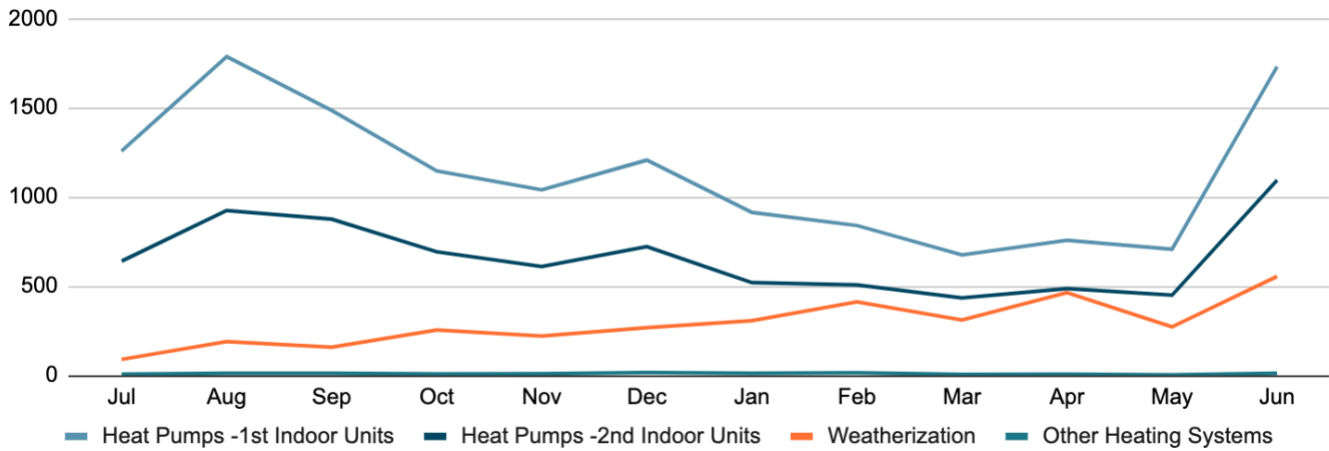
PROGRAM RESULTS

Energy Loans



Home Energy Savings Program (HESP)

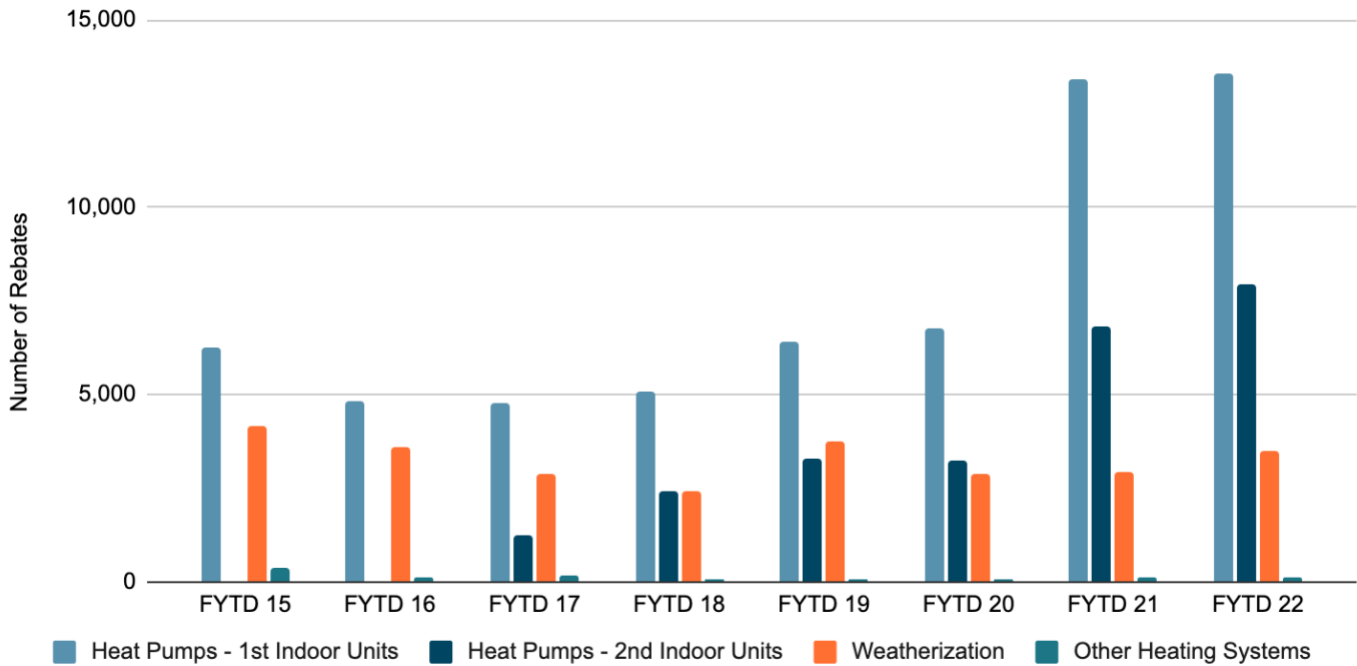
HESP Number of Rebates – Last 12 Months



HESP Number of Rebates – Last 12 Months (DETAILS)

#	HESP Rebate Type	2021						2022						Total
		Jul	Aug	Sep	Oct	Nov	Dec	Jan	Feb	Mar	Apr	May	Jun	
1	Heat Pumps - 1st Indoor Units	1,258	1,787	1,486	1,146	1,041	1,207	914	840	676	757	708	1,730	13,550
2	Heat Pumps - 2nd Indoor Units	641	924	876	693	610	722	520	507	435	487	450	1,094	7,959
3	Air Sealing	28	59	48	70	53	76	97	120	98	128	72	161	1,010
4	Attic Insulation	28	66	50	85	80	95	107	138	105	161	91	192	1,198
5	Basement Insulation	25	47	41	72	60	74	78	100	82	120	77	146	922
6	Wall Insulation	9	18	20	28	28	23	25	54	26	55	32	56	374
7	Geothermal HP	3	2	1	2	1	4	3	2	1	3	0	2	24
8	Pellet Boiler	5	10	11	7	9	13	9	13	5	4	3	11	100
Total		1,997	2,913	2,533	2,103	1,882	2,214	1,753	1,774	1,428	1,715	1,433	3,392	25,137

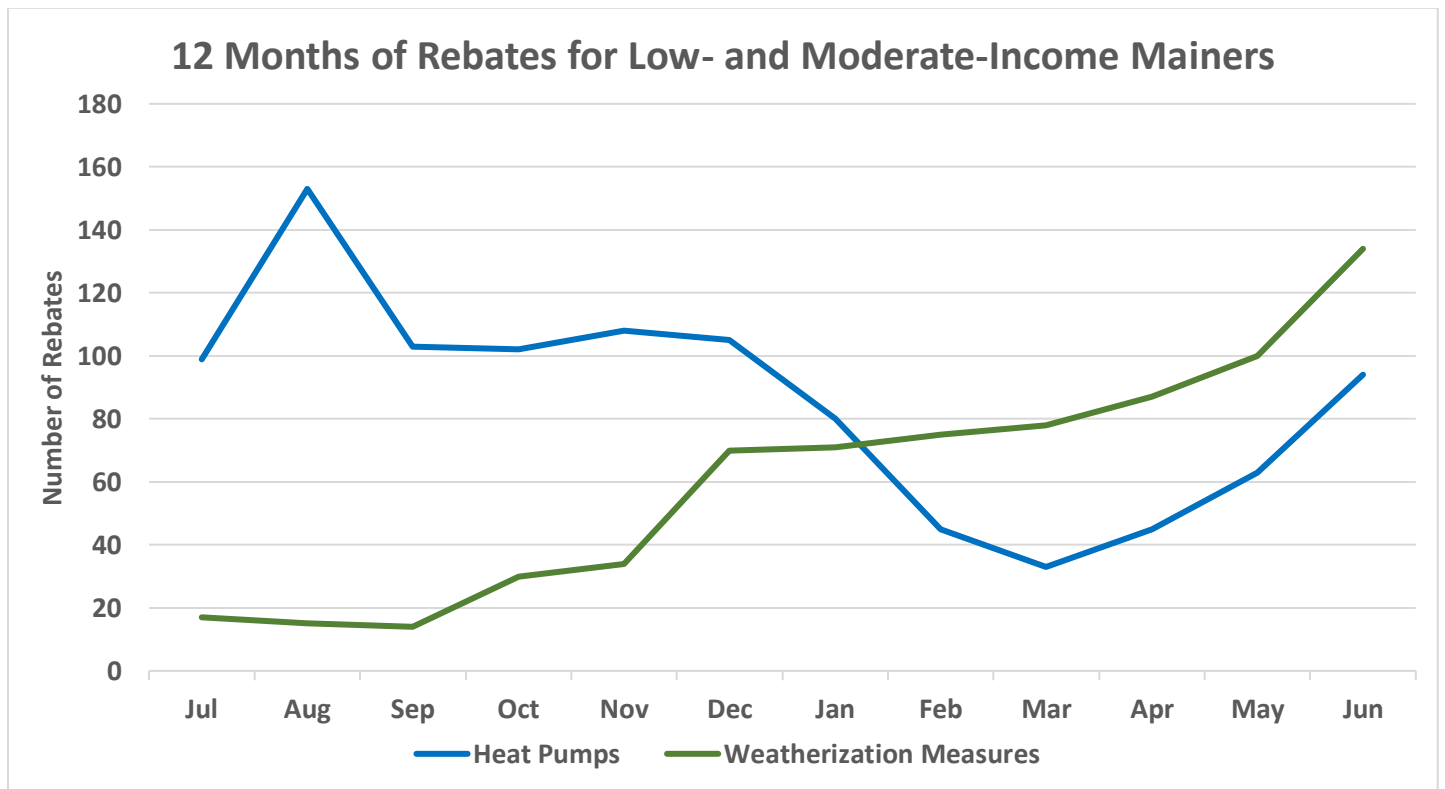
Fiscal Year-to-Date Rebate Comparisons



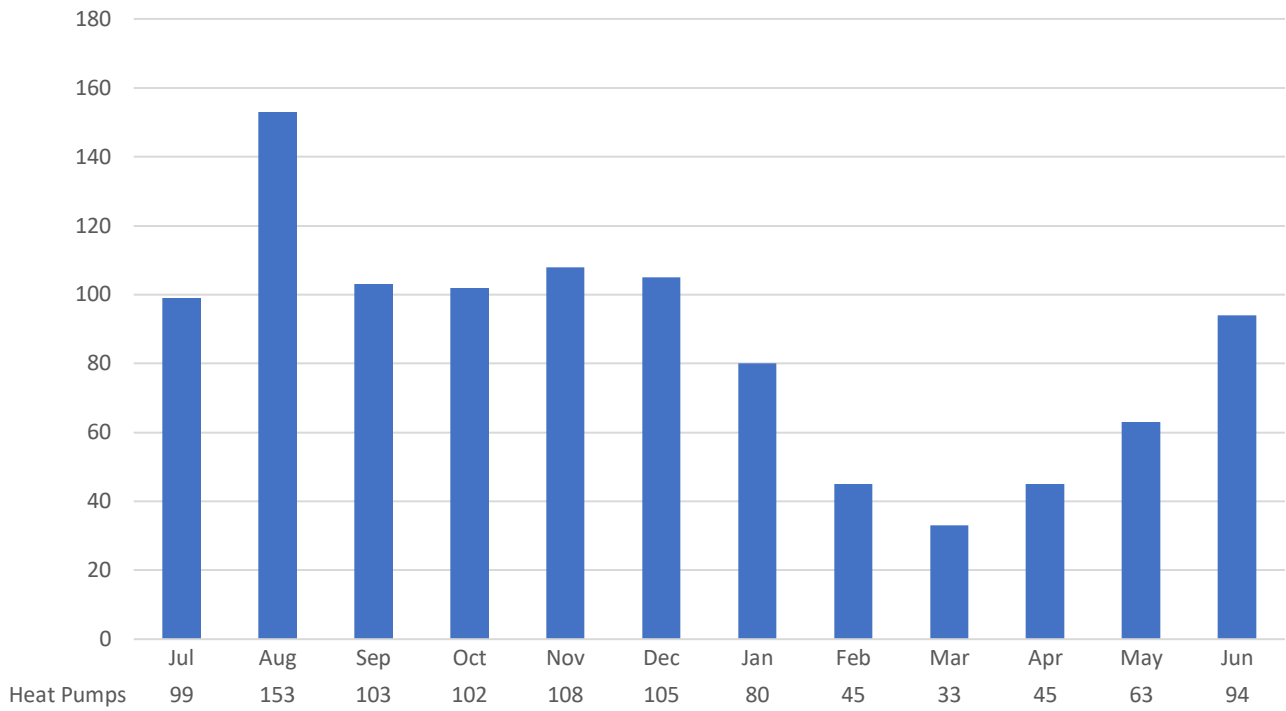
Fiscal Year-to-Date Rebate Comparisons (DETAILS)

#	HESP Rebate Type	FYTD 15	FYTD 16	FYTD 17	FYTD 18	FYTD 19	FYTD 20	FYTD 21	FYTD 22
1	Heat Pumps - 1st Indoor Units	6,247	4,845	4,782	5,073	6,425	6,762	13,408	13,550
2	Heat Pumps - 2nd Indoor Units	0	0	1,227	2,398	3,296	3,260	6,828	7,959
3	Air Sealing	2,153	1,662	1,288	1,061	1,382	1,019	971	1,010
4	Attic Insulation	1,056	1,085	871	726	1,124	883	917	1,198
5	Basement Insulation	757	601	496	424	883	684	749	922
6	Wall Insulation	209	257	250	187	386	277	304	374
7	Geothermal HP	98	67	79	18	24	34	25	24
8	Pellet Boiler	287	76	86	55	42	56	74	100
Total Measures Installed		10,807	8,593	9,079	9,942	13,562	12,975	23,276	25,137

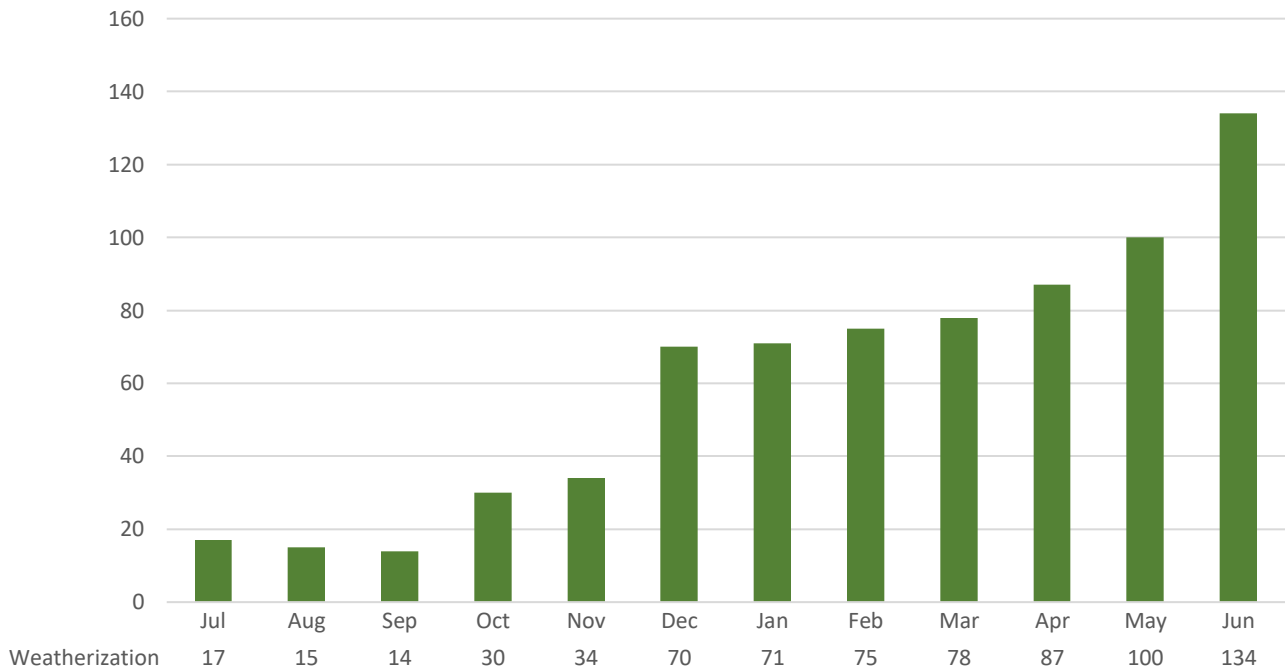
Low Income Program



12 Months of LMI Heat Pumps



12 Months of LMI Weatherization Measures



Rebates for Low- and Moderate-Income Mainers - Last 12 Months (DETAILS)

Low- and Moderate-Income Rebate Type	2021						2022						Totals
	Jul	Aug	Sep	Oct	Nov	Dec	Jan	Feb	Mar	Apr	May	Jun	Last 12 Months
Heat Pumps	99	153	103	102	108	105	80	45	33	45	63	94	1,030
LMI Air Sealing w/Assessment (\$600)	7	9	6	16	22	39	30	32	31	40	39	50	321
LMI Attic Insulation (currently 90% up to \$9,000)	5	3	2	7	6	13	16	19	20	22	28	32	173
LMI Basement Insulation (currently 90% up to \$9,000)	4	3	4	6	4	12	19	18	19	21	26	36	172
LMI Wall Insulation (currently 90% up to \$9,000)	1	0	2	1	2	6	6	6	8	4	7	16	59
Weatherization Measures	17	15	14	30	34	70	71	75	78	87	100	134	725
Total LMI Measures	116	168	117	132	142	175	151	120	111	132	163	228	1,755