

# Residential Registered Vendor Monthly Newsletter August 10, 2022



- 1) **Record Level of Weatherization Rebates** – Good news. We processed nearly 2,000 weatherization rebates over the course of the last four months. This is unprecedented for this time of year, as is the nearly 100-day average backlog for installers to serve new customers. This shows that there's strong demand and that installers are staffing up to meet it.
- 2) **New Heat Pump and Weatherization Financial Example** – We recently updated our [heat pump](#) and [weatherization](#) financial examples. You will find that the examples have a clearer layout, new graphics, and a stronger emphasis on savings.
- 3) **Insulation "Location" Field** – To expedite insulation rebate processing, enter one of the three locations listed ("basement", "wall", or "attic") on rebate claim form. Entering anything else can delay processing.
- 4) **Fact of the Month** – The current statewide average cost per gallon of heating oil (\$4.85) is still close to the record high that was set in May (source: [State of Maine, Governor's Energy Office](#)).

**Maine Residential Heating Oil Prices 2004-2022**



- 5) **Tool of the Month** – Our [Quick Guide to Home Heating](#) was recently updated to account for current equipment, installation, utility and fuel costs. It still shows that heat pumps are one of the most cost-effective options for home heating in Maine, and the only one that can also provide air conditioning.

- 6) **Heat Pump Installation Training Opportunities** – The following courses are being offered by Efficiency Maine Registered Trainers.

Dates	Course Title	Location	Registration Information
8/22/2022 – 8/26/2022	Heat Pump Installer*	Kennebec Valley Community College	<a href="#">Click for course information</a>
9/26/2022 – 9/30/2022	Heat Pump Installer*	Maine Energy Marketer’s Association	<a href="#">Click for course information</a>
10/3/2022 – 10/7/2022	Heat Pump Installer*	Kennebec Valley Community College	<a href="#">Click for course information</a>
12/19/2022 – 12/23/2022	Heat Pump Installer*	Maine Energy Marketer’s Association	<a href="#">Click for course information</a>

\* Eligible for [Efficiency Maine scholarship](#) (50% up to \$500)

- 7) **Weatherization Training Opportunities** – Build Green Maine is offering BPI Training & Testing classes. If interested, please follow this link to the [BPI course registration](#). You can request a scholarship by filling out this [form](#) from Kennebec Valley Community College (KVCC) or by filling out Efficiency Maine’s scholarship [form](#).

Dates	Course Title	Location	Registration Information
9/12/2022 – 9/16/2022	Building Analyst & Envelope Professional	Build Green Maine	<a href="#">Click for course information</a>
10/10/2022 – 10/14/2022	Building Analyst & Envelope Professional	Build Green Maine	<a href="#">Click for course information</a>
11/7/2022 – 11/11/2022	Building Analyst & Envelope Professional	Build Green Maine	<a href="#">Click for course information</a>
12/5/2022 – 12/9/2022	Building Analyst & Envelope Professional	Build Green Maine	<a href="#">Click for course information</a>

8) **Top Insulation Performers (past four months)**

1. Horizon Residential Energy Services
2. Evergreen Home Performance
3. Seal It Insulation Systems

9) **Top Heat Pump Performers (past four months)**

1. Dave’s World
2. Valley Home Services
3. Royal River Heat Pumps

10) **Top Low-Income Insulation Performers (past four months)**

1. Installations Unlimited
2. New England Spray Foam Insulation
3. CJ Insulation & Subcontractors

11) **Top Low-Income Heat Pump Performers (past four months)**

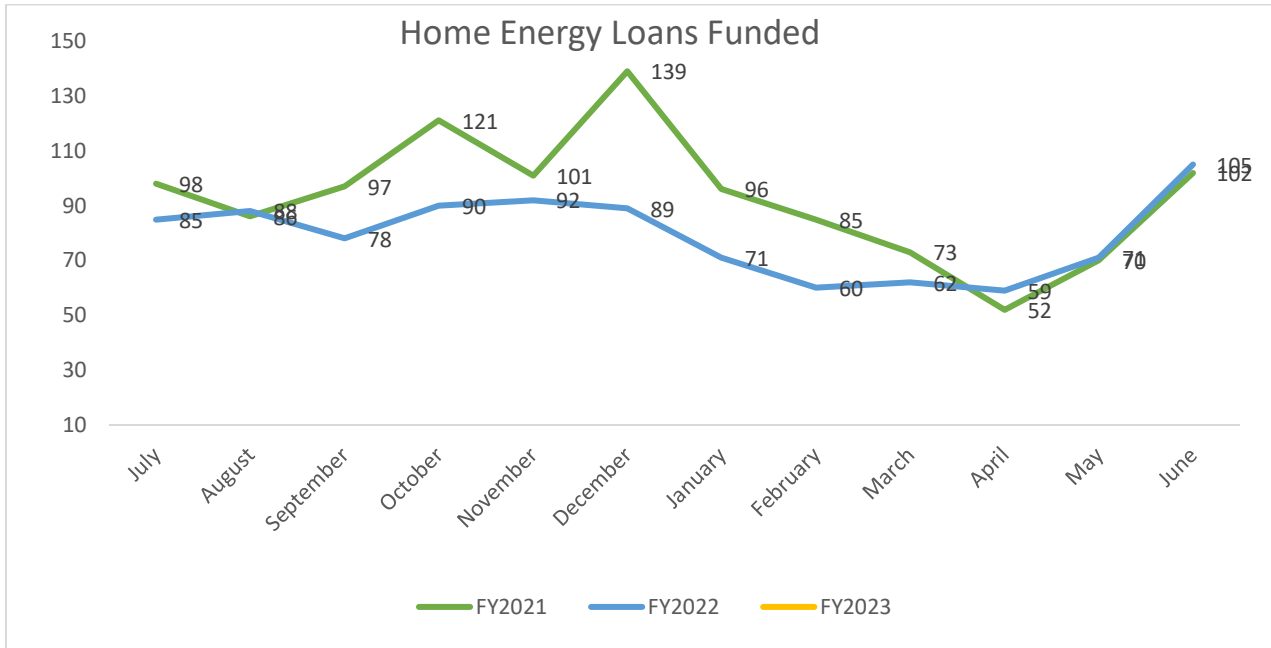
1. Valley Home Services
2. Dave’s World
3. Nicatou Stove Shops

**12) Loan Update** – July’s 123 loans were 45% above July of last. If you don't already have a loan portal ID and password, you can reach our financial services provider (NEIF) by calling our Call Center (866-376-2463).

(Program Results follow on next page)

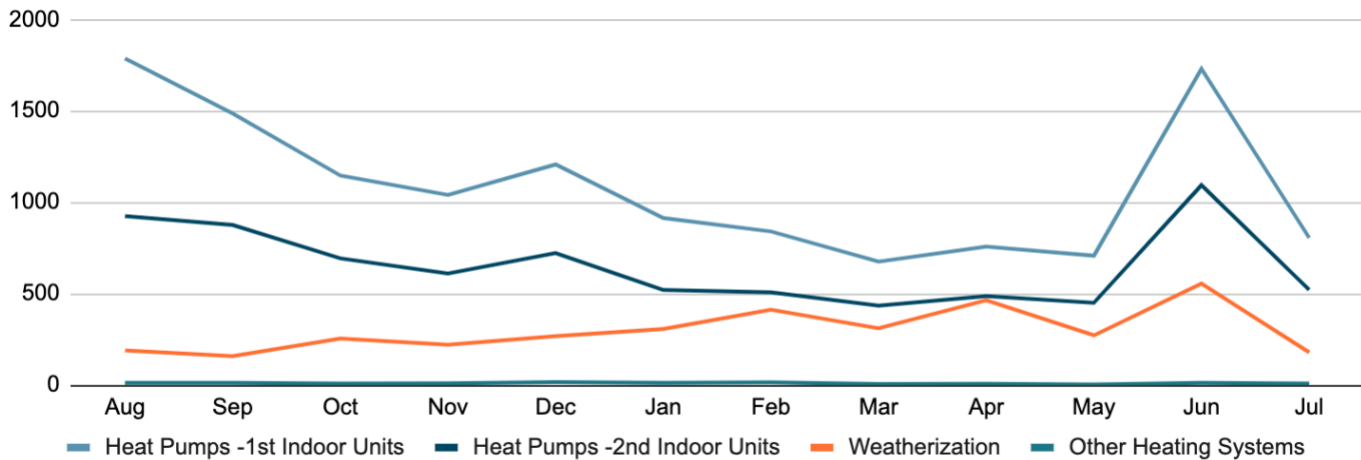
**PROGRAM RESULTS**

**Energy Loans**



**Home Energy Savings Program (HESP)**

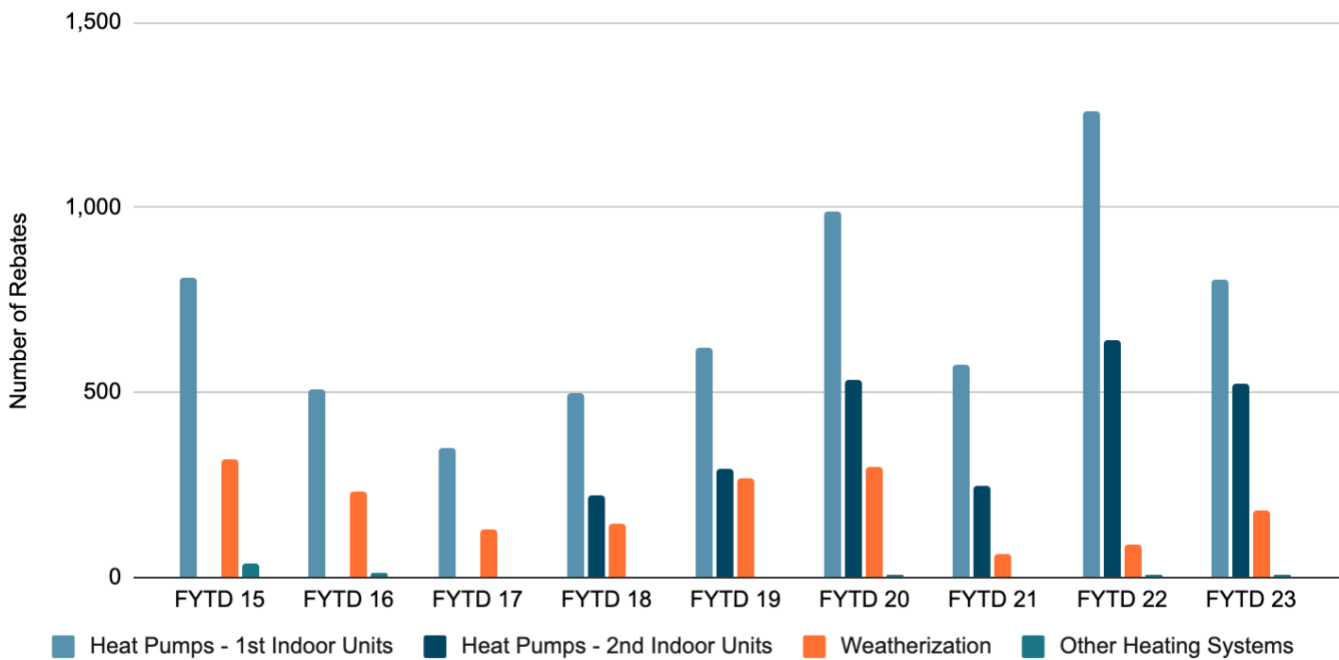
**HESP Number of Rebates – Last 12 Months**



### HESP Number of Rebates – Last 12 Months (DETAILS)

#	HESP Rebate Type	2021					2022							Total
		Aug	Sep	Oct	Nov	Dec	Jan	Feb	Mar	Apr	May	Jun	Jul	
1	Heat Pumps - 1st Indoor Units	1,787	1,486	1,146	1,041	1,207	914	840	676	757	708	1,730	806	<b>10,562</b>
2	Heat Pumps - 2nd Indoor Units	924	876	693	610	722	520	507	435	487	450	1,094	521	<b>6,224</b>
3	Air Sealing	59	48	70	53	76	97	120	98	128	72	161	51	<b>821</b>
4	Attic Insulation	66	50	85	80	95	107	138	105	161	91	192	62	<b>978</b>
5	Basement Insulation	47	41	72	60	74	78	100	82	120	77	146	46	<b>751</b>
6	Wall Insulation	18	20	28	28	23	25	54	26	55	32	56	20	<b>309</b>
7	Geothermal HP	2	1	2	1	4	3	2	1	3	0	2	0	<b>19</b>
8	Pellet Boiler	10	11	7	9	13	9	13	5	4	3	11	9	<b>84</b>
<b>Total</b>		<b>2,913</b>	<b>2,533</b>	<b>2,103</b>	<b>1,882</b>	<b>2,214</b>	<b>1,753</b>	<b>1,774</b>	<b>1,428</b>	<b>1,715</b>	<b>1,433</b>	<b>3,392</b>	<b>1,515</b>	<b>19,748</b>

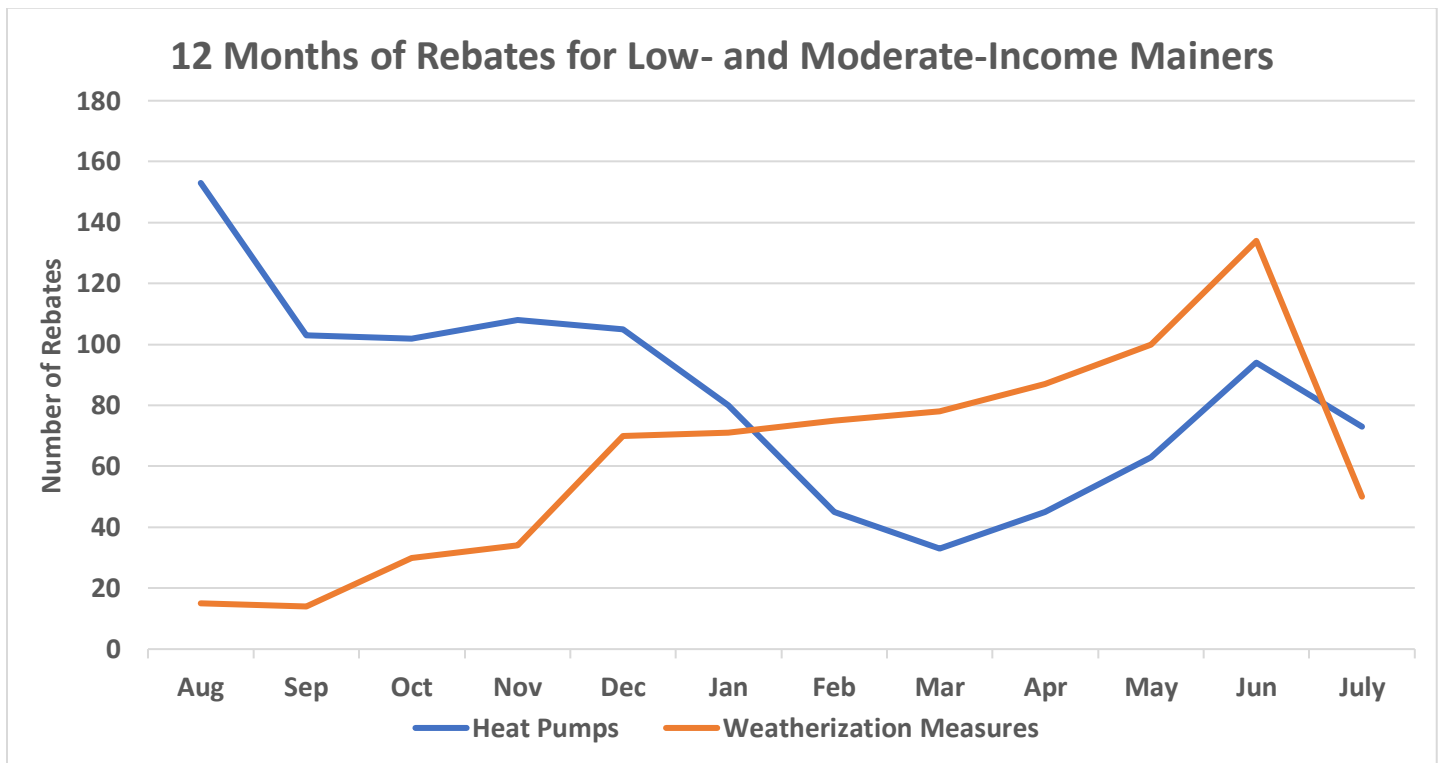
### Fiscal Year-to-Date Rebate Comparisons



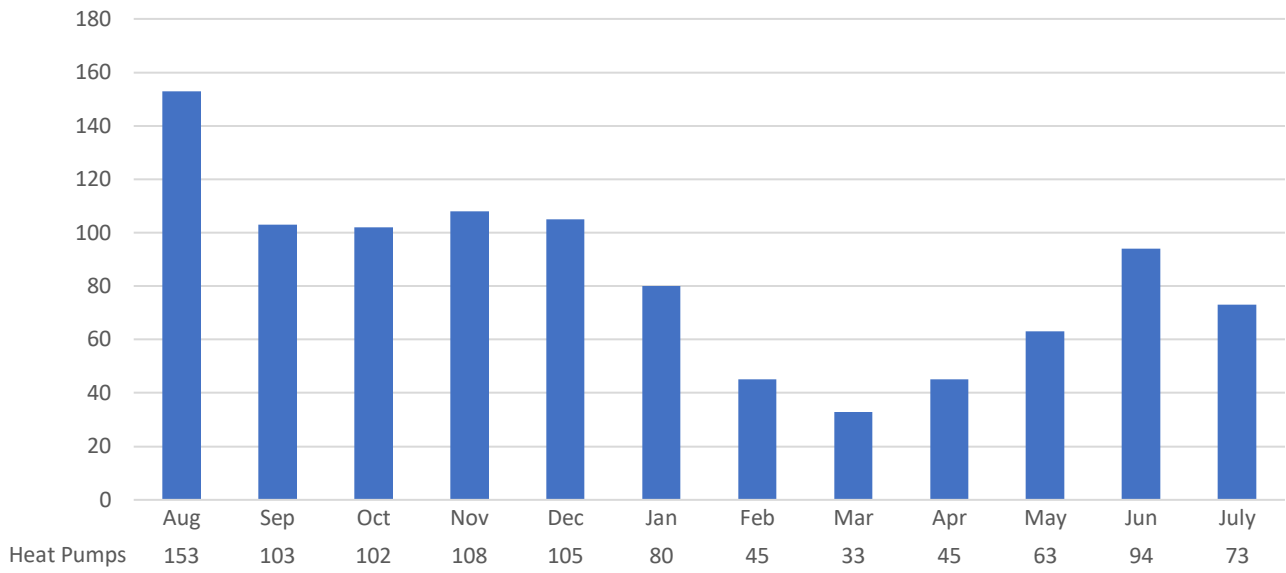
### Fiscal Year-to-Date Rebate Comparisons (DETAILS)

#	HESP Rebate Type	FYTD 15	FYTD 16	FYTD 17	FYTD 18	FYTD 19	FYTD 20	FYTD 21	FYTD 22	FYTD 23
1	Heat Pumps - 1st Indoor Units	811	507	351	496	619	990	572	1,258	806
2	Heat Pumps - 2nd Indoor Units	0	0	0	221	294	534	245	641	521
3	Air Sealing	158	113	52	64	107	104	21	28	51
4	Attic Insulation	72	66	41	47	75	94	17	28	62
5	Basement Insulation	78	37	21	20	57	78	16	25	46
6	Wall Insulation	9	17	17	12	27	23	9	9	20
7	Geothermal HP	7	5	0	1	1	3	1	3	0
8	Pellet Boiler	33	7	3	1	2	2	2	5	9
<b>Total Measures Installed</b>		<b>1,168</b>	<b>752</b>	<b>485</b>	<b>862</b>	<b>1,182</b>	<b>1,828</b>	<b>883</b>	<b>1,997</b>	<b>1,515</b>

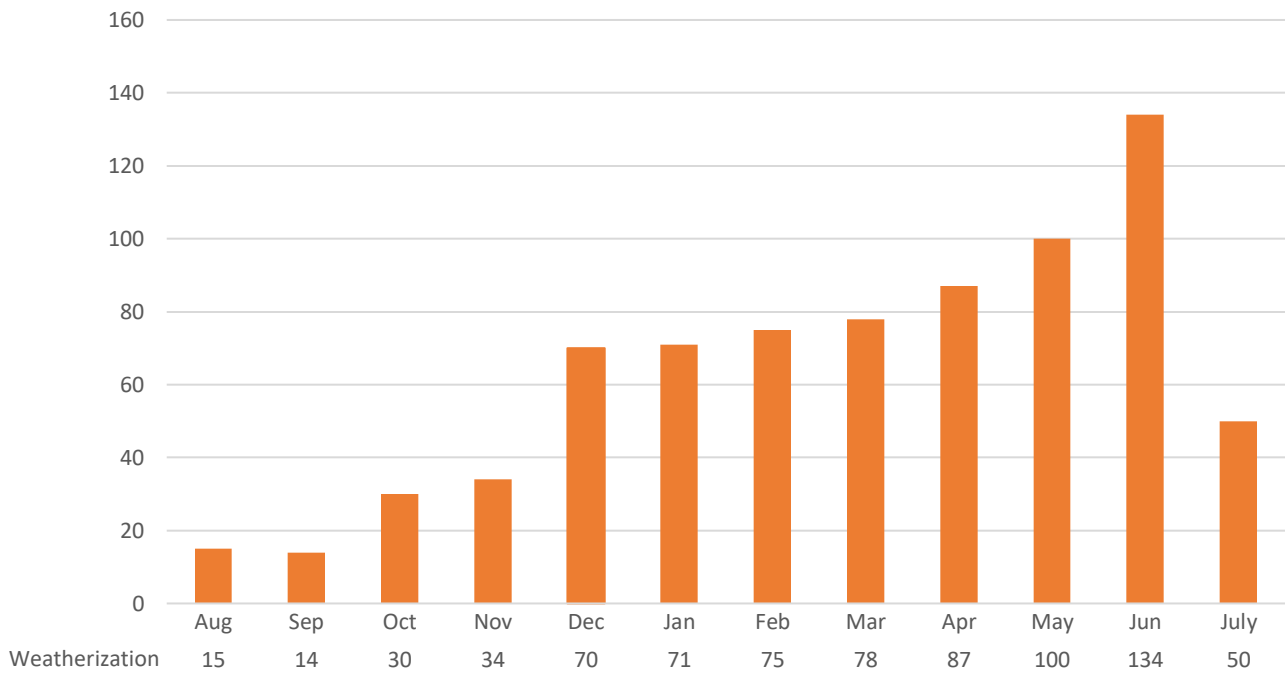
### Low Income Program



### 12 Months of LMI Heat Pumps



### 12 Months of LMI Weatherization Measures



### Rebates for Low- and Moderate-Income Mainers - Last 12 Months (DETAILS)

Low- and Moderate-Income Rebate Type	2021					2022							Totals
	Aug	Sep	Oct	Nov	Dec	Jan	Feb	Mar	Apr	May	Jun	July	Last 12 Months
<b>Heat Pumps</b>	<b>153</b>	<b>103</b>	<b>102</b>	<b>108</b>	<b>105</b>	<b>80</b>	<b>45</b>	<b>33</b>	<b>45</b>	<b>63</b>	<b>94</b>	<b>73</b>	<b>1,004</b>
LMI Air Sealing w/Assessment (\$600)	9	6	16	22	39	30	32	31	40	39	50	18	332
LMI Attic Insulation (currently 90% up to \$9,000)	3	2	7	6	13	16	19	20	22	28	32	11	179
LMI Basement Insulation (currently 90% up to \$9,000)	3	4	6	4	12	19	18	19	21	26	36	13	181
LMI Wall Insulation (currently 90% up to \$9,000)	0	2	1	2	6	6	6	8	4	7	16	8	66
<b>Weatherization Measures</b>	<b>15</b>	<b>14</b>	<b>30</b>	<b>34</b>	<b>70</b>	<b>71</b>	<b>75</b>	<b>78</b>	<b>87</b>	<b>100</b>	<b>134</b>	<b>50</b>	<b>758</b>
<b>Total LMI Measures</b>	<b>168</b>	<b>117</b>	<b>132</b>	<b>142</b>	<b>175</b>	<b>151</b>	<b>120</b>	<b>111</b>	<b>132</b>	<b>163</b>	<b>228</b>	<b>123</b>	<b>1,762</b>