

**Residential Registered Vendor
Monthly Newsletter
September 15, 2022**



- 1) **New Heat Pump Efficiency Ratings** – Starting January 1, 2023, manufacturers will replace the rating used to describe heat pump efficiency (heating seasonal performance factor or HSPF) with HSPF2. When this happens, we will switch our heat pump rebate eligibility criteria to HSPF2 levels that are roughly equivalent to our current HSPF levels. To make our rebates predictable (for example, for price quotes), we will grandfather all currently eligible models through 6/30/2023.
- 2) **The Inflation Reduction Act ("IRA")** – This act was enacted 8/16/2022 to expand home energy efficiency tax credits and rebates. We expect detailed guidance in 2023 and will keep you posted. In the meantime, for customers asking, "Should I delay upgrading my house until we know what the IRA incentives are?" we are saying, "While there may be additional incentives, waiting has its risks. We **don't** know the final eligibility criteria or how upgrade prices will be impacted. We **do** know that delaying an upgrade will guarantee missed energy savings."
- 3) **Heat Pump and Weatherization Marketing** – We continue to invest in promoting heat pumps and weatherization. We hope this is helping your businesses grow.
- 4) **Tip from the Field** – When asked to rate their overall experience with a rebated upgrade, the most highly satisfied customers consistently say how much they appreciate that the installer showed up on time, kept the worksite clean, and was polite and helpful.
- 5) **Tool of the Month** – Our [All Programs Brochure](#) is a one-page summary of all Efficiency Maine offerings and you can order them on our [brochure request page](#).
- 6) **Heat Pump Installation Training Opportunities** – The following courses are being offered by Efficiency Maine Registered Trainers.

Dates	Course Title	Location	Registration Information
9/26/2022 – 9/30/2022	Heat Pump Installer*	Maine Energy Marketers Association	Click for course information
10/3/2022 – 10/7/2022	Heat Pump Installer*	Kennebec Valley Community College	Click for course information
12/5/2022 – 12/9/2022	Heat Pump Installer*	Kennebec Valley Community College	Click for course information
12/19/2022 – 12/23/2022	Heat Pump Installer*	Maine Energy Marketers Association	Click for course information

* Eligible for [Efficiency Maine scholarship](#) (50% up to \$500)

7) **Weatherization Training Opportunities** – Build Green Maine is offering BPI Training & Testing classes. If interested, please follow this link to the [BPI course registration](#). You can request a scholarship by filling out this [form](#) from Kennebec Valley Community College (KVCC) or by filling out Efficiency Maine’s scholarship [form](#).

Dates	Course Title	Location	Registration Information
10/10/2022 – 10/14/2022	Building Analyst & Envelope Professional	Build Green Maine	Click for course information
11/7/2022 – 11/11/2022	Building Analyst & Envelope Professional	Build Green Maine	Click for course information
12/5/2022 – 12/9/2022	Building Analyst & Envelope Professional	Build Green Maine	Click for course information

8) **Top Insulation Performers (past four months)**

1. Horizon Residential Energy Services
2. Evergreen Home Performance
3. New England Spray Foam Insulation

9) **Top Heat Pump Performers (past four months)**

1. Dave’s World
2. Valley Home Services
3. Royal River Heat Pumps

10) **Top Low-Income Insulation Performers (past four months)**

1. New England Spray Foam Insulation
2. Installations Unlimited
3. RS Insulation Inc

11) **Top Low-Income Heat Pump Performers (past four months)**

1. Valley Home Services
2. Dave’s World
3. Nicatou Stove Shops

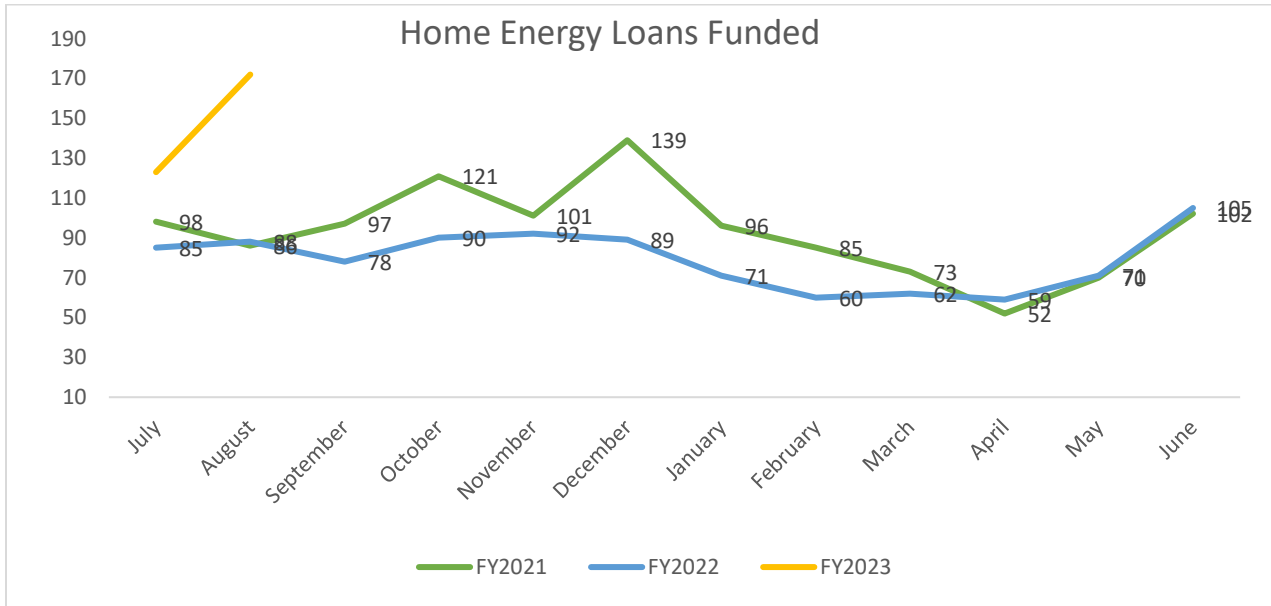
12) **Loan Update** – Effective 9/12/2022, we made a change to our home energy loan cap. Unsecured loans are now capped at \$7,500. Secured loans are still available up to \$15,000.

August’s 172 loans were 95% above August of last year **and fiscal year-to-date loans are up 71% over last year**. If you don't already have a loan portal ID and password, you can reach our financial services provider (NEIF) by calling our Call Center (866-376-2463).

(Program Results follow on next page)

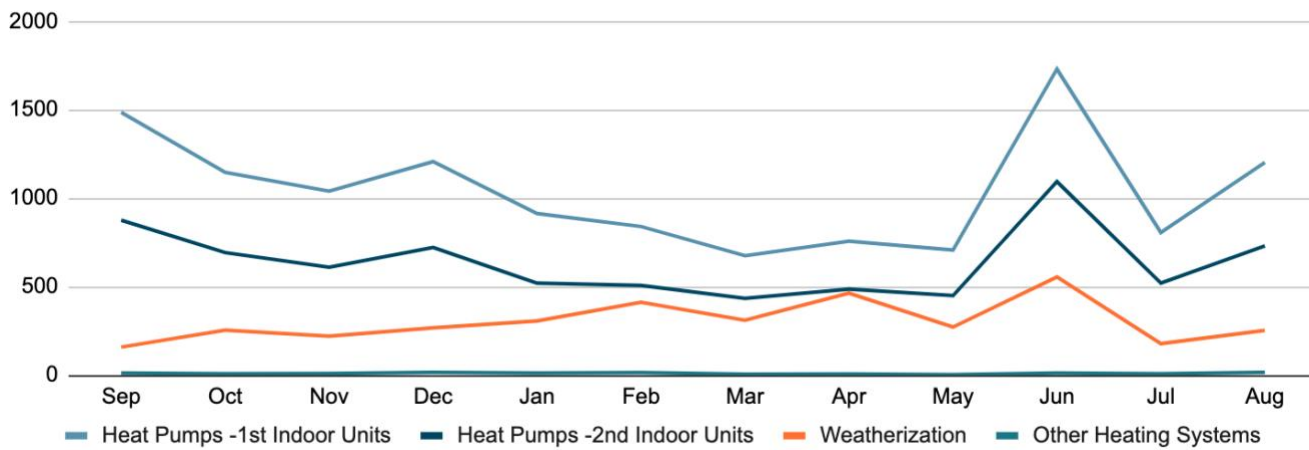
PROGRAM RESULTS

Energy Loans



Home Energy Savings Program (HESP)

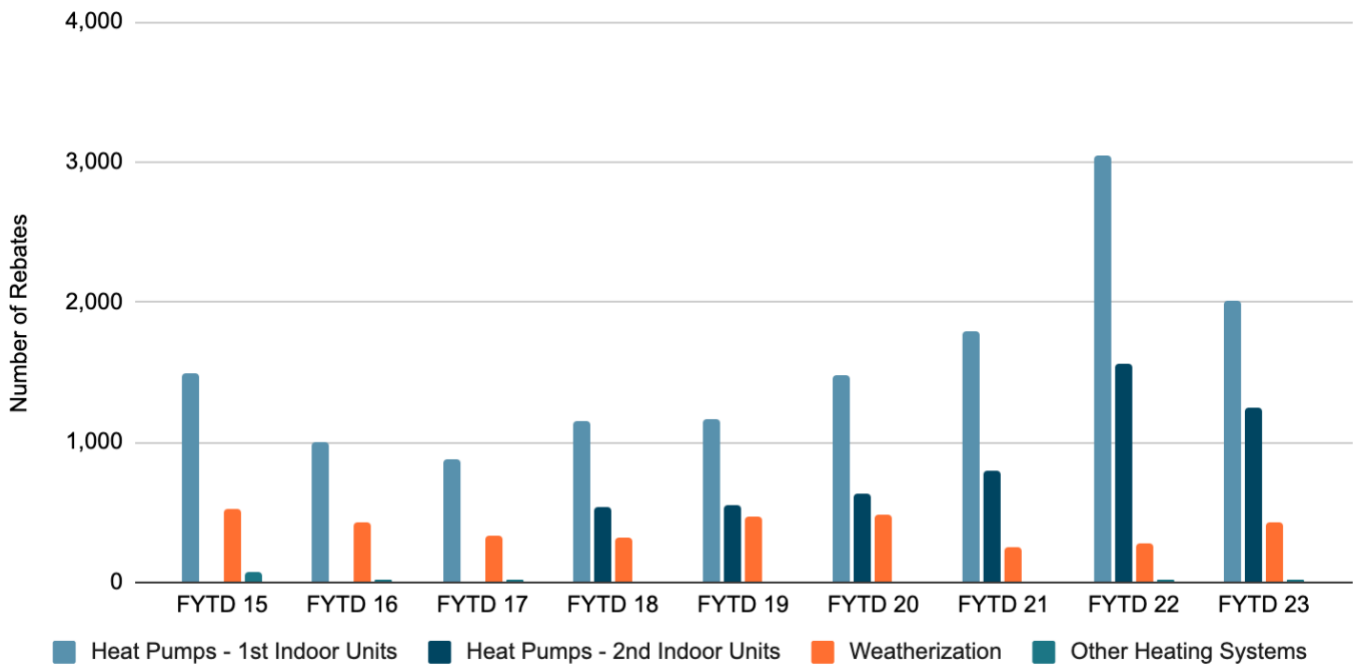
HESP Number of Rebates – Last 12 Months



HESP Number of Rebates – Last 12 Months (DETAILS)

#	HESP Rebate Type	2021				2022								Total
		Sep	Oct	Nov	Dec	Jan	Feb	Mar	Apr	May	Jun	Jul	Aug	
1	Heat Pumps - 1st Indoor Units	1,486	1,146	1,041	1,207	914	840	676	757	708	1,730	806	1,202	12,513
2	Heat Pumps - 2nd Indoor Units	876	693	610	722	520	507	435	487	450	1,094	521	731	7,646
3	Air Sealing	48	70	53	76	97	120	98	128	72	161	51	76	1,050
4	Attic Insulation	50	85	80	95	107	138	105	161	91	192	62	86	1,252
5	Basement Insulation	41	72	60	74	78	100	82	120	77	146	46	63	959
6	Wall Insulation	20	28	28	23	25	54	26	55	32	56	20	29	396
7	Geothermal HP	1	2	1	4	3	2	1	3	0	2	0	1	20
8	Pellet Boiler	11	7	9	13	9	13	5	4	3	11	9	15	109
Total		2,533	2,103	1,882	2,214	1,753	1,774	1,428	1,715	1,433	3,392	1,515	2,203	23,945

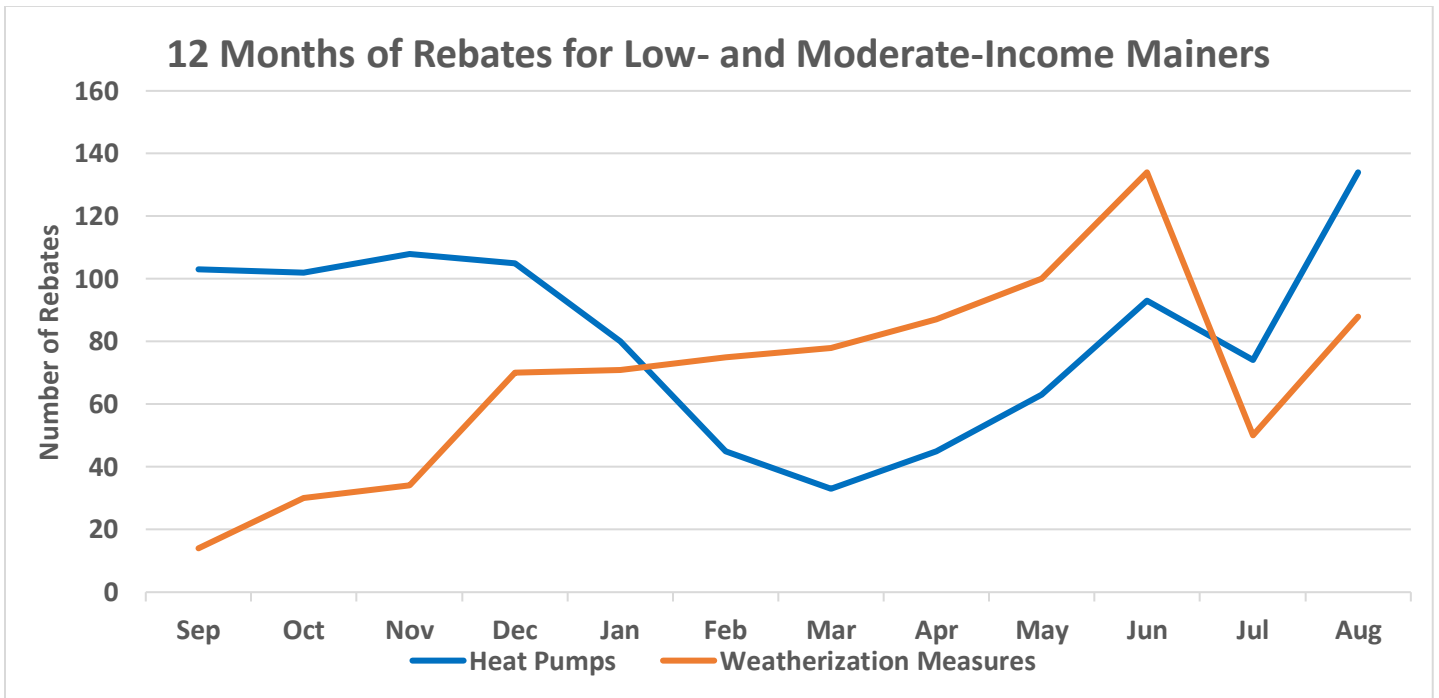
Fiscal Year-to-Date Rebate Comparisons



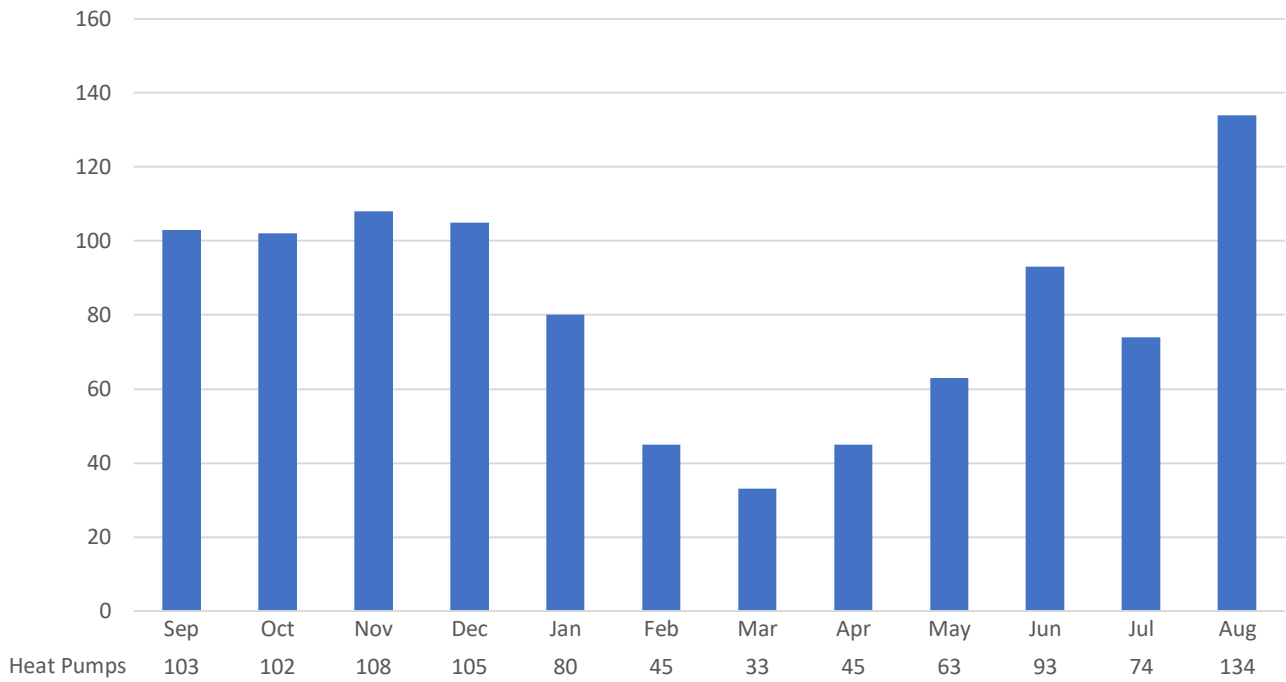
Fiscal Year-to-Date Rebate Comparisons (DETAILS)

#	HESP Rebate Type	FYTD 15	FYTD 16	FYTD 17	FYTD 18	FYTD 19	FYTD 20	FYTD 21	FYTD 22	FYTD 23
1	Heat Pumps - 1st Indoor Units	1,488	998	880	1,146	1,162	1,481	1,793	3,045	2,008
2	Heat Pumps - 2nd Indoor Units	0	0	0	532	552	632	797	1,565	1,252
3	Air Sealing	270	218	148	144	181	175	88	87	127
4	Attic Insulation	121	126	91	97	134	143	71	94	148
5	Basement Insulation	110	68	51	44	100	128	54	72	109
6	Wall Insulation	23	20	37	27	49	34	32	27	49
7	Geothermal HP	12	13	8	3	3	3	2	5	1
8	Pellet Boiler	61	10	6	2	4	6	8	15	24
Total Measures Installed		2,085	1,453	1,221	1,995	2,185	2,602	2,845	4,910	3,718

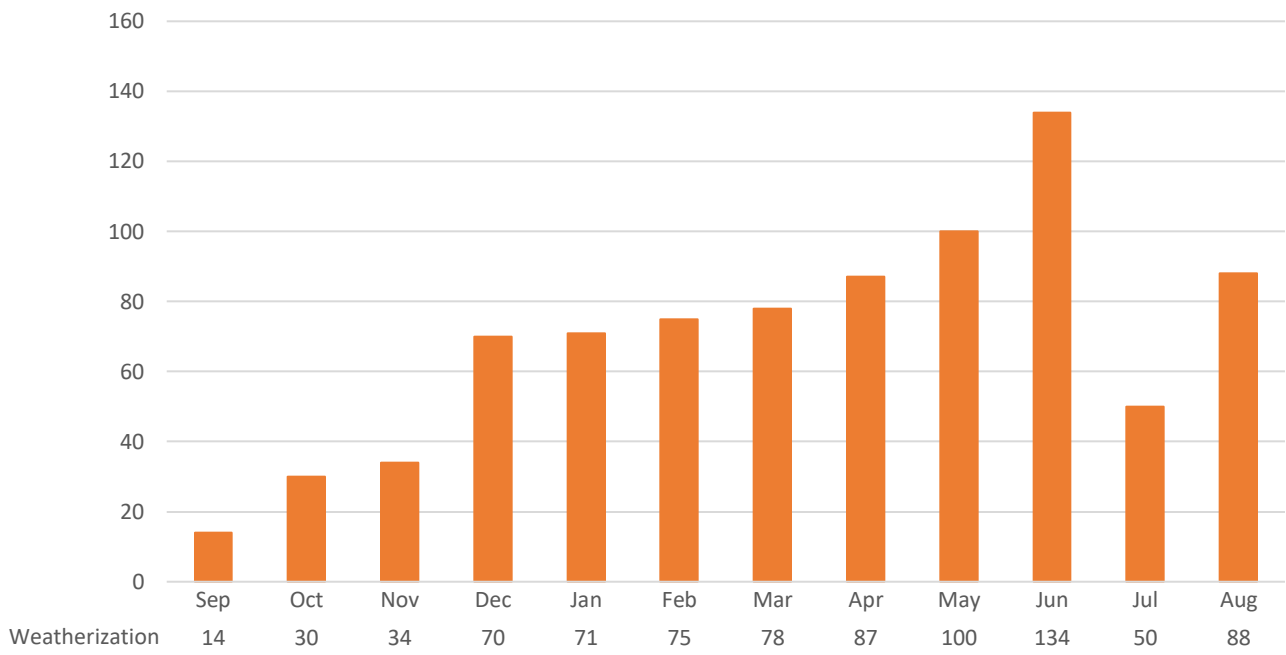
Low Income Program



12 Months of LMI Heat Pumps



12 Months of LMI Weatherization Measures



Rebates for Low- and Moderate-Income Mainers - Last 12 Months (DETAILS)

Low- and Moderate-Income Rebate Type	2021				2022								Totals
	Sep	Oct	Nov	Dec	Jan	Feb	Mar	Apr	May	Jun	Jul	Aug	Last 12 Months
Heat Pumps	103	102	108	105	80	45	33	45	63	93	74	134	985
LMI Air Sealing w/Assessment (\$600)	6	16	22	39	30	32	31	40	39	50	18	26	349
LMI Attic Insulation (currently 90% up to \$9,000)	2	7	6	13	16	19	20	22	28	32	11	24	200
LMI Basement Insulation (currently 90% up to \$9,000)	4	6	4	12	19	18	19	21	26	36	13	27	205
LMI Wall Insulation (currently 90% up to \$9,000)	2	1	2	6	6	6	8	4	7	16	8	11	77
Weatherization Measures	14	30	34	70	71	75	78	87	100	134	50	88	831
Total LMI Measures	117	132	142	175	151	120	111	132	163	227	124	222	1,816