

**Residential Registered Vendor
Monthly Newsletter
November 10, 2022**



- 1) **Reminder: Rebate Claim Window Changed From 90 Days to Six Months** – Good news. We heard from some of you that our 90-day window to submit claims was a challenge, so we changed it:

FROM: Rebate claim form emailed or postmarked within 90 days of project completion.

TO: Rebate claim form emailed or postmarked within six months of project completion.

We hope this makes rebate processing easier.

- 2) **Perfect Scores** – Congratulations to the following RRVs who received four or more perfect customer satisfaction scores in October: Dave’s World, Royal River Heat Pumps, Valley Home Services, Revision Energy, The Breathable Home, LaPlante Electric, Horizon Residential Energy Services, Evergreen Home Performance, and Seal It Insulation Systems.
- 3) **Follow Us on Twitter and Facebook** – Stay up-to-date on the latest from Efficiency Maine and other industry news by following us on [Twitter](#) and [Facebook](#).
- 4) **Tip from the Field** – Homeowners often tell us that they appreciate it when installers review blower door test results with them and suggest additional improvements.
- 5) **New “Natural Gas Provider” Field** – A “Natural Gas Service Provider” field was recently added to the weatherization claim form. To expedite rebate processing, please note provider when natural gas is used for heat.
- 6) **Fact of the Month** – As of October, The Home Depot and Lowe’s are now selling heat pump water heaters for \$549 after our instant discount. No need to wait for a rebate.
- 7) **Tool of the Month – Heat Pump Water Heater Myths & Facts** – We have dozens of brochures available to Residential Registered Vendors at no charge. One is "[Heat Pump Water Heater Myths & Facts](#)." It covers myths like:

Do they work in Maine's winters? (yes)

What mode heats water fastest? (hybrid)

Do you need to neutralize the condensate? (no)

Hopefully this tool will help you help your customers. If you'd like us to send you free, professionally printed copies, you can order them on our [website](#), download them from the [web](#), or call us at 866-376-2463.

8) **Heat Pump Installation Training Opportunities** – The following courses are being offered by Efficiency Maine Registered Trainers.

Dates	Course Title	Location	Registration Information
12/5/2022 – 12/9/2022	Heat Pump Installer*	Kennebec Valley Community College	Click for course information
12/19/2022 – 12/23/2022	Heat Pump Installer*	Maine Energy Marketers Association	Click for course information
1/9/2023 – 1/13/2023	Heat Pump Installer*	Kennebec Valley Community College	Click for course information

* Eligible for [Efficiency Maine scholarship](#) (50% up to \$500)

9) **Weatherization Training Opportunities** – Build Green Maine is offering BPI Training & Testing classes. If interested, please follow this link to the [BPI course registration](#). You can request a scholarship by filling out this [form](#) from Kennebec Valley Community College (KVCC) or by filling out Efficiency Maine’s scholarship [form](#).

Dates	Course Title	Location	Registration Information
12/5/2022 – 12/9/2022	Building Analyst & Envelope Professional	Build Green Maine	Click for course information

10) Top Insulation Performers (past four months)

1. Horizon Residential Energy Services
2. Evergreen Home Performance
3. Seal It Insulation Systems

11) Top Heat Pump Performers (past four months)

1. Dave’s World
2. Valley Home Services
3. Royal River Heat Pumps

12) Top Low-Income Insulation Performers (past four months)

1. New England Spray Foam Insulation
2. Installations Unlimited
3. CJ Insulation & Subcontractors

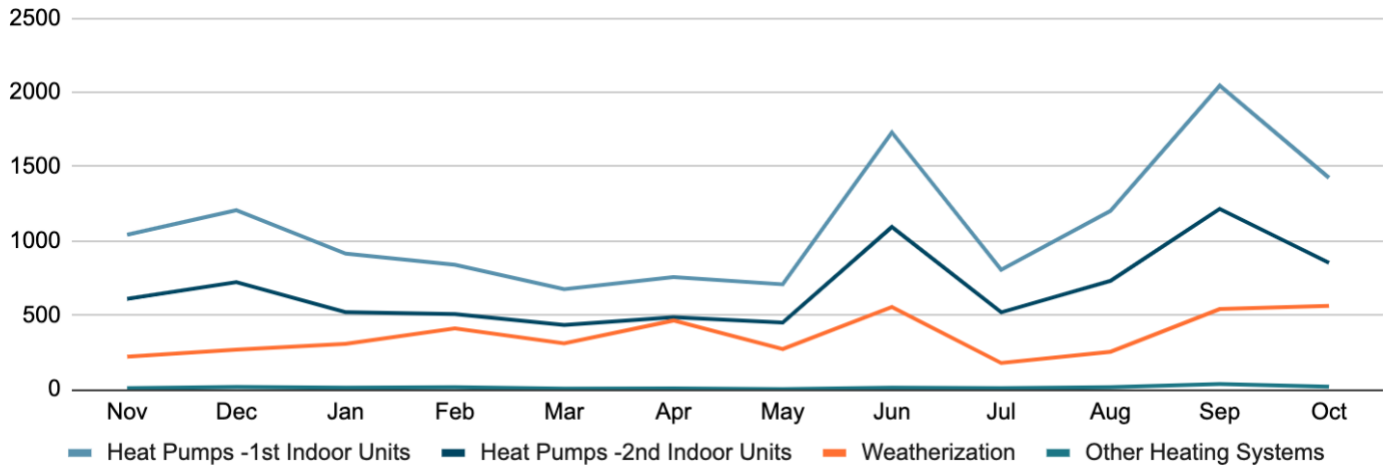
13) Top Low-Income Heat Pump Performers (past four months)

1. Valley Home Services
2. Dave’s World
3. Nicatou Stove Shops

PROGRAM RESULTS

Home Energy Savings Program (HESP)

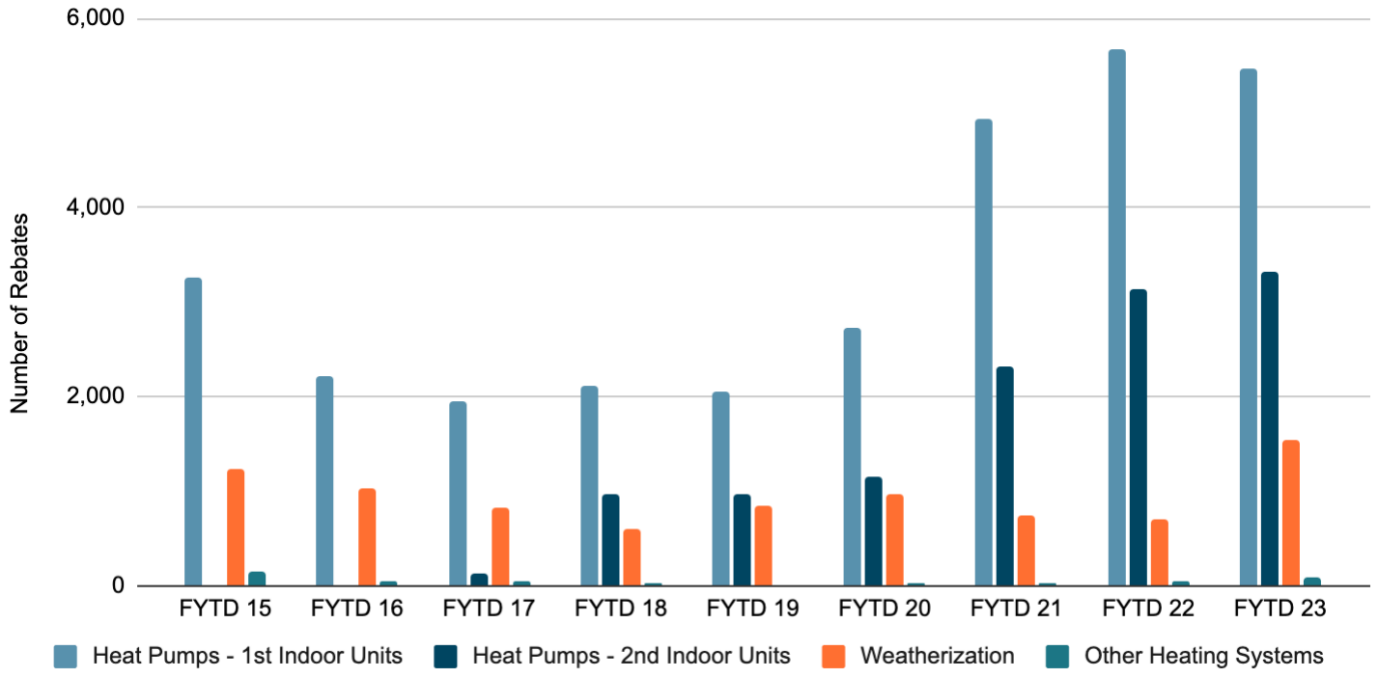
HESP Number of Rebates – Last 12 Months



HESP Number of Rebates – Last 12 Months (DETAILS)

#	HESP Rebate Type	2021		2022										Total
		Nov	Dec	Jan	Feb	Mar	Apr	May	Jun	Jul	Aug	Sep	Oct	
1	Heat Pumps - 1st Indoor Units	1,041	1,207	914	840	676	757	708	1,730	805	1,202	2,045	1,425	13,350
2	Heat Pumps - 2nd Indoor Units	610	722	520	507	435	487	450	1,094	520	731	1,216	853	8,145
3	Air Sealing	53	76	97	120	98	128	72	161	51	76	139	169	1,240
4	Attic Insulation	80	95	107	138	105	161	91	192	62	86	182	181	1,480
5	Basement Insulation	60	74	78	100	82	120	77	146	46	63	138	147	1,131
6	Wall Insulation	28	23	25	54	26	55	32	56	20	29	82	66	496
7	Geothermal HP	1	4	3	2	1	3	0	2	0	1	3	0	20
8	Pellet Boiler	9	13	9	13	5	4	3	11	9	15	34	19	144
Total		1,882	2,214	1,753	1,774	1,428	1,715	1,433	3,392	1,513	2,203	3,839	2,860	26,006

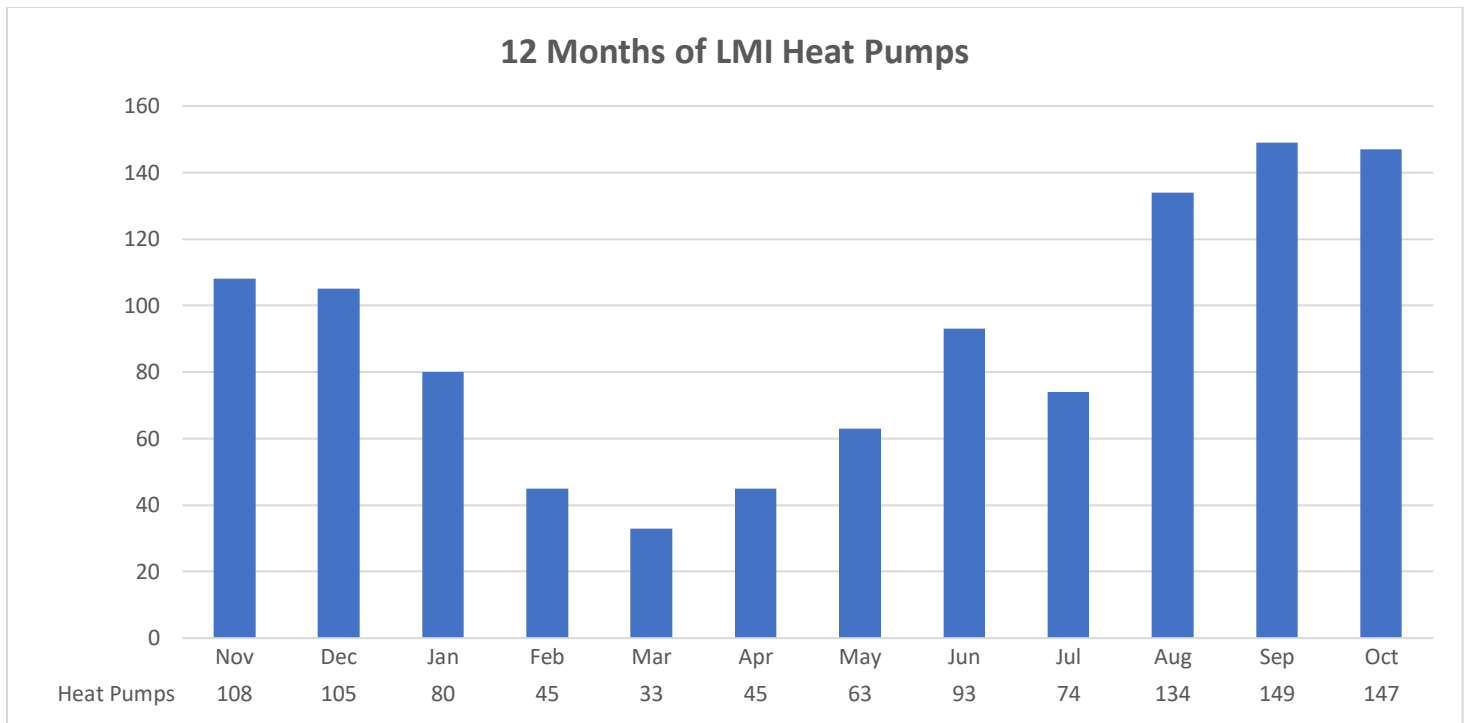
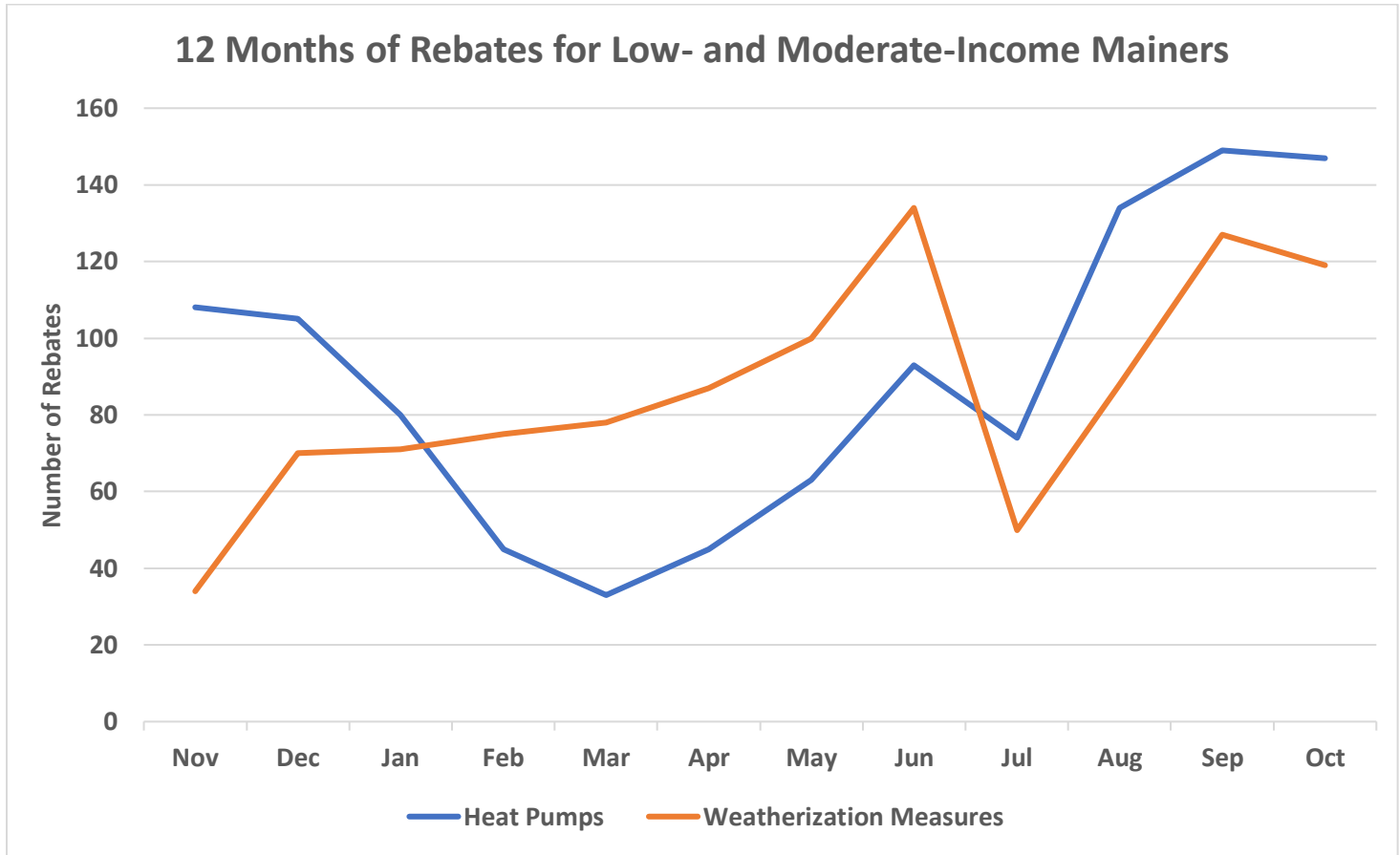
Fiscal Year-to-Date Rebate Comparisons



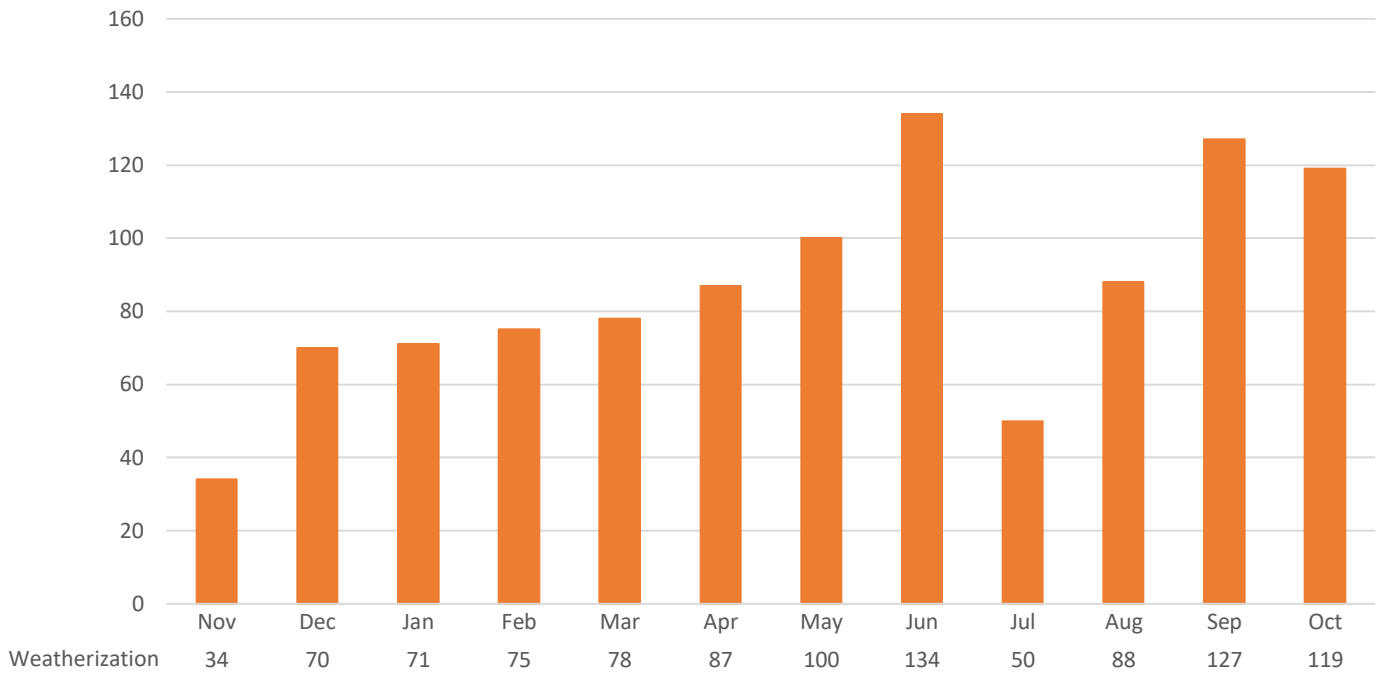
Fiscal Year-to-Date Rebate Comparisons (DETAILS)

#	HESP Rebate Type	FYTD 15	FYTD 16	FYTD 17	FYTD 18	FYTD 19	FYTD 20	FYTD 21	FYTD 22	FYTD 23
1	Heat Pumps - 1st Indoor Units	3,251	2,225	1,959	2,110	2,058	2,718	4,934	5,677	5,477
2	Heat Pumps - 2nd Indoor Units	0	0	138	969	967	1,155	2,311	3,134	3,320
3	Air Sealing	681	508	374	266	330	342	257	205	435
4	Attic Insulation	264	292	263	182	238	291	227	229	511
5	Basement Insulation	222	173	116	96	181	237	186	185	394
6	Wall Insulation	58	65	74	47	99	97	79	75	197
7	Geothermal HP	27	21	20	3	4	6	5	8	4
8	Pellet Boiler	131	30	25	18	13	18	19	33	77
Total Measures Installed		4,634	3,314	2,969	3,691	3,890	4,864	8,018	9,546	10,415

Low Income Program



12 Months of LMI Weatherization Measures



Rebates for Low- and Moderate-Income Mainers - Last 12 Months (DETAILS)

Low- and Moderate-Income Rebate Type	2021		2022						2022				Total
	Nov	Dec	Jan	Feb	Mar	Apr	May	Jun	Jul	Aug	Sep	Oct	Last 12 Months
Heat Pumps	108	105	80	45	33	45	63	93	74	134	149	147	1,076
LMI Air Sealing w/Assessment (\$600)	22	39	30	32	31	40	39	50	18	26	39	44	410
LMI Attic Insulation (currently 90% up to \$9,000)	6	13	16	19	20	22	28	32	11	24	29	35	255
LMI Basement Insulation (currently 90% up to \$9,000)	4	12	19	18	19	21	26	36	13	27	42	25	262
LMI Wall Insulation (currently 90% up to \$9,000)	2	6	6	6	8	4	7	16	8	11	17	15	106
Weatherization Measures	34	70	71	75	78	87	100	134	50	88	127	119	1,033
Total LMI Measures	142	175	151	120	111	132	163	227	124	222	276	266	2,109