

# Residential Registered Vendor Monthly Newsletter



**October 12, 2023**

**1) *Transitioning to Whole-Home Heat Pump Rebates*** – As a reminder, we’re shifting the focus for our rebates from “partial-home” heat pumps to whole-home heat pumps.

Highlights are:

1. Rebate amounts increased:
  - a) Low income - 80% up to \$8,000 rebate (for participants in HEAP, SNAP, TANF, MaineCare)
  - b) Moderate income - 60% up to \$6,000 rebate (income-based, no longer property assessed value)
  - c) Any income - 40% of project cost up to \$4,000 rebate
2. Heat pumps must be sized to meet at least 80% of the home’s peak heating load.
3. Only the costs of [25C federal tax-eligible](#) heat pumps with one indoor unit each (including ducted indoor units) are eligible for a rebate
4. Boilers/furnaces need to be connected only to generator or disabled (lock power in off position, disconnect from panel, or disconnect all related thermostats)
5. These new rebates are available for projects completed on or after 9/18/2023. Our previous rebates are available for projects completed on or before 10/31/2023, or on projects with low- and moderate-income reservations made before 9/18/2023.
6. Note: \$2,000 federal tax credits are available to support both partial-home and whole-home heat pumps.

For complete details, [click here](#).

**2) *Reminder: Tax Assessed Valuation Pathway*** – As a reminder, tax assessed valuation of land and building will no longer be an eligible pathway for enhanced rebates after 10/31/2023. Instead, customers can visit this [form](#) to receive verification of their federal Adjusted Gross Income to be eligible for 60% of the insulation project cost up to a \$6,000 rebate.

**3) *Triennial Plan Input*** – We're seeking input for our Triennial Plan covering the period beginning July 1, 2025. If you'd like to contribute input, please click [here](#). We're asking for input by 12/12/2023.

- 4) Annual Event Recognitions for Excellence** – Our 9/14/2023 Annual Event drew over 200 people from all over the state. The following companies were recognized for excellence: Lowe's, FW Webb, Bell Simons Waterville, Dave's World, Valley Home Services, New England Spray Foam Insulation, Webb Insulation LLC, Gateway Mechanical, Royal River Heat Pumps LLC, Horizon Homes, and Evergreen Home Performance.
- 5) Tip from the Field** – For the whole-home heat pump rebates, the option to disable primary, fossil-fueled, space-heating systems can be achieved by installing wall switch locks on boiler/furnace emergency switches. Lockouts are available for less than \$10 and can be secured with a zip tie.
- 6) Rebate Processing Tip** – Please note that with the claims for the new whole-home heat pump rebates, you'll need to submit all three pages of the claim form, plus an invoice showing installation cost before rebate, date, and installation address.
- 7) Fact of the Month** – Some heat pumps offer 100% of their rated capacity down to negative 15 degrees F, 85% down to negative 22 degrees F, and still produce comfortably warm air at negative 31 degrees F.
- 8) Tool of the Month** – We recently added a quick and easy way to estimate the peak heating load of a home using only heating fuel usage. Click [here](#) to see our heating load estimator.
- 9) Heat Pump Installation Training Opportunities** – The following courses are being offered by Efficiency Maine Registered Trainers. You can request a scholarship by filling out our scholarship [form](#).

Dates	Course Title	Location	Registration Information
11/13/2023 – 11/17/2023	Heat Pump Installer*	Maine Energy Marketers Association	<a href="#">Click for course information</a>
1/8/2024 – 1/12/2024	Heat Pump Installer*	Kennebec Valley Community College	<a href="#">Click for course information</a>

\* Eligible for [Efficiency Maine scholarship](#) (50% up to \$500)

**10) Weatherization Training Opportunities** – Build Green Maine is offering BPI Training & Testing classes. If interested, please follow this link to the [BPI course registration](#). You can request a scholarship by filling out our scholarship [form](#).

Dates	Course Title	Location	Registration Information
10/16/2023 – 10/20/2023	Building Analyst Technician Field Training and Testing (2 Days)	Build Green Maine	<a href="#">Click for course information</a>
11/13/2023 – 11/20/2023	Building Analyst Technician Field Training and Testing (2 Days)	Build Green Maine	<a href="#">Click for course information</a>

**11) Top Insulation Performers (past four months)**

- a. Horizon Homes
- b. Evergreen Home Performance
- c. Seal It Insulation Systems

**12) Top Heat Pump Performers (past four months)**

- a. Dave’s World
- b. Royal River Heat Pumps
- c. Valley Home Services

**13) Top LMI Insulation Performers (past four months)**

- a. Evergreen Home Performance
- b. New England Spray Foam Insulation
- c. Mattra, Inc

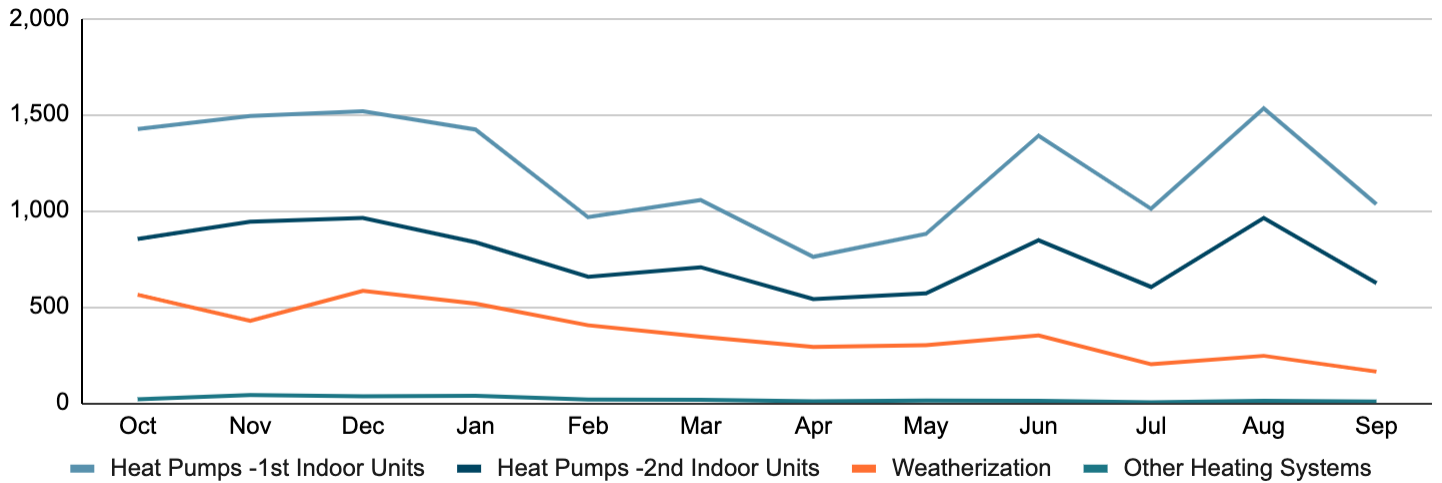
**14) Top LMI Heat Pump Performers (past four months)**

- a. Dave’s World
- b. Valley Home Services
- c. Heat Pumps Of Maine

## PROGRAM RESULTS

### Home Energy Savings Program (HESP)

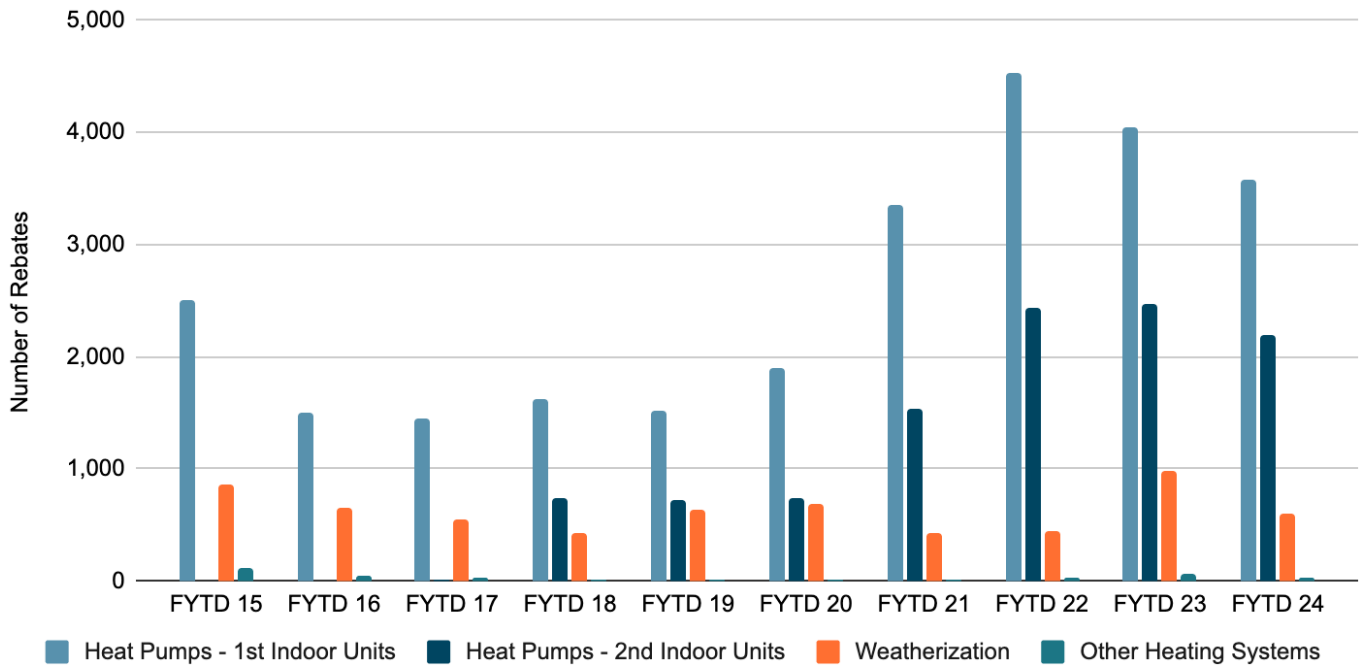
#### HESP Number of Rebates – Last 12 Months



#### HESP Number of Rebates – Last 12 Months (DETAILS)

#	HESP Rebate Type	2022												Total
		Oct	Nov	Dec	Jan	Feb	Mar	Apr	May	Jun	Jul	Aug	Sep	
1	Heat Pumps - 1st Indoor Units	1,425	1,492	1,517	1,422	966	1,055	760	879	1,389	1,010	1,532	1,034	<b>14,481</b>
2	Heat Pumps - 2nd Indoor Units	853	942	962	836	656	706	540	570	846	603	962	624	<b>9,100</b>
3	Air Sealing	169	109	148	133	109	101	92	92	100	63	42	6	<b>1,164</b>
4	Attic Insulation	181	154	204	161	129	124	93	122	121	62	96	69	<b>1,516</b>
5	Basement Insulation	147	118	166	165	122	88	83	58	89	57	74	57	<b>1,224</b>
6	Wall Insulation	66	46	65	58	44	32	23	29	41	19	33	31	<b>487</b>
7	Geothermal HP	0	3	0	7	5	3	3	1	3	0	1	1	<b>27</b>
8	Pellet Boiler	19	38	35	30	13	13	6	12	8	4	10	7	<b>195</b>
<b>Total</b>		<b>2,860</b>	<b>2,902</b>	<b>3,097</b>	<b>2,812</b>	<b>2,044</b>	<b>2,122</b>	<b>1,600</b>	<b>1,763</b>	<b>2,597</b>	<b>1,818</b>	<b>2,750</b>	<b>1,829</b>	<b>28,194</b>

### Fiscal Year-to-Date Rebate Comparisons

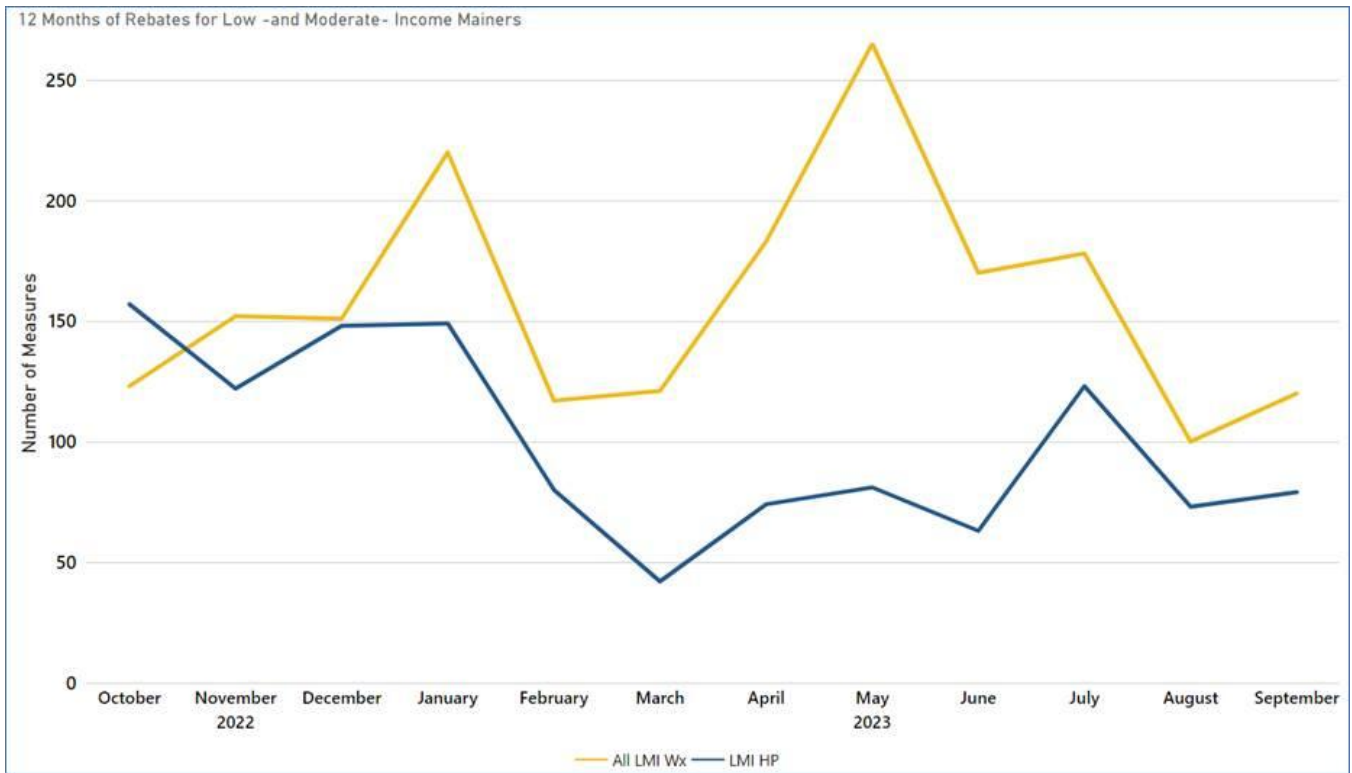


### Fiscal Year-to-Date Rebate Comparisons (DETAILS)

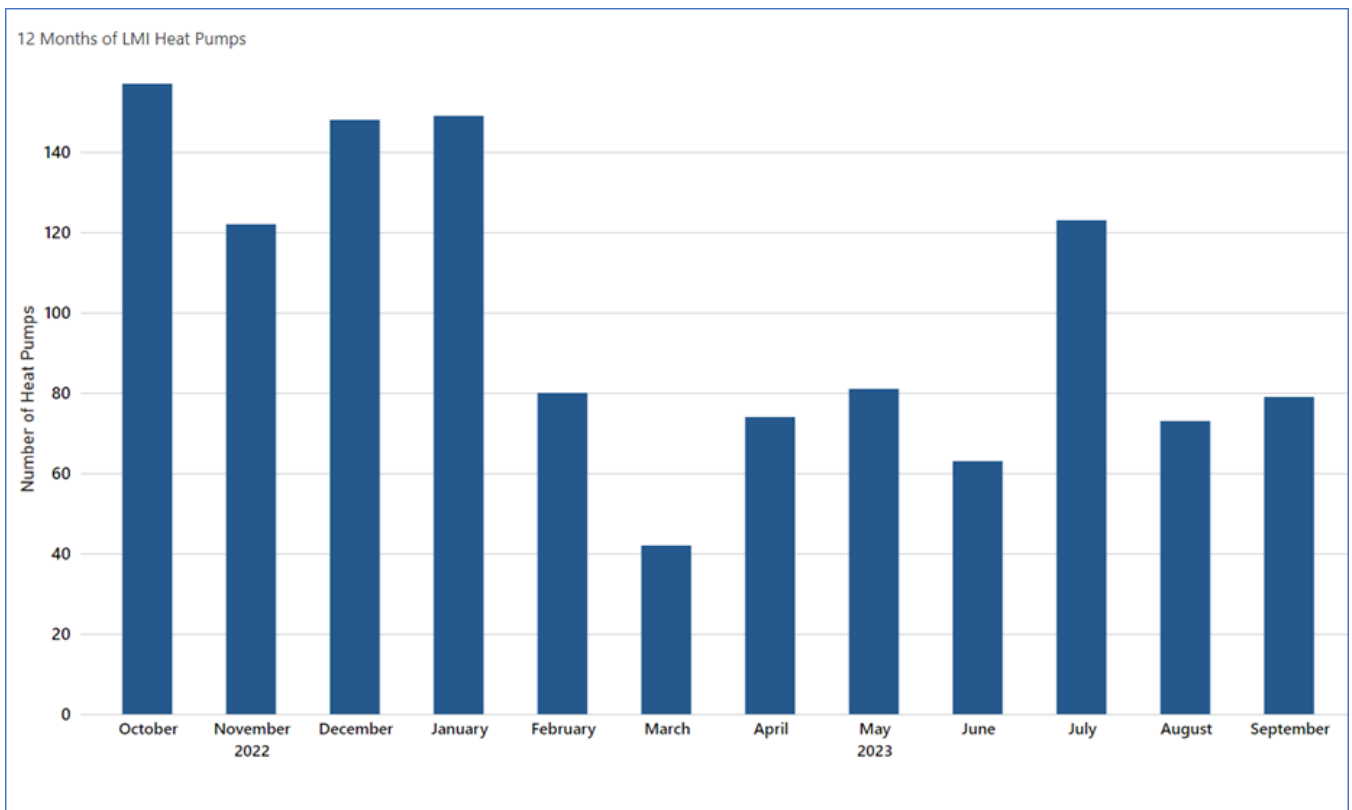
#	HESP Rebate Type	FYTD 15	FYTD 16	FYTD 17	FYTD 18	FYTD 19	FYTD 20	FYTD 21	FYTD 22	FYTD 23	FYTD 24
1	Heat Pumps - 1st Indoor Units	2,509	1,493	1,450	1,622	1,525	1,892	3,360	4,531	4,052	3,576
2	Heat Pumps - 2nd Indoor Units	0	0	17	731	730	738	1,531	2,441	2,467	2,189
3	Air Sealing	482	332	256	198	256	248	142	135	268	111
4	Attic Insulation	177	182	166	129	176	210	136	144	333	227
5	Basement Insulation	173	108	84	67	131	168	98	113	247	188
6	Wall Insulation	35	36	50	32	72	66	49	47	133	83
7	Geothermal HP	17	17	11	3	3	5	2	6	4	2
8	Pellet Boiler	97	23	14	5	6	10	16	26	58	21
<b>Total Measures Installed</b>		<b>3,490</b>	<b>2,191</b>	<b>2,048</b>	<b>2,787</b>	<b>2,899</b>	<b>3,337</b>	<b>5,334</b>	<b>7,443</b>	<b>7,562</b>	<b>6,397</b>

## Low-Income Program

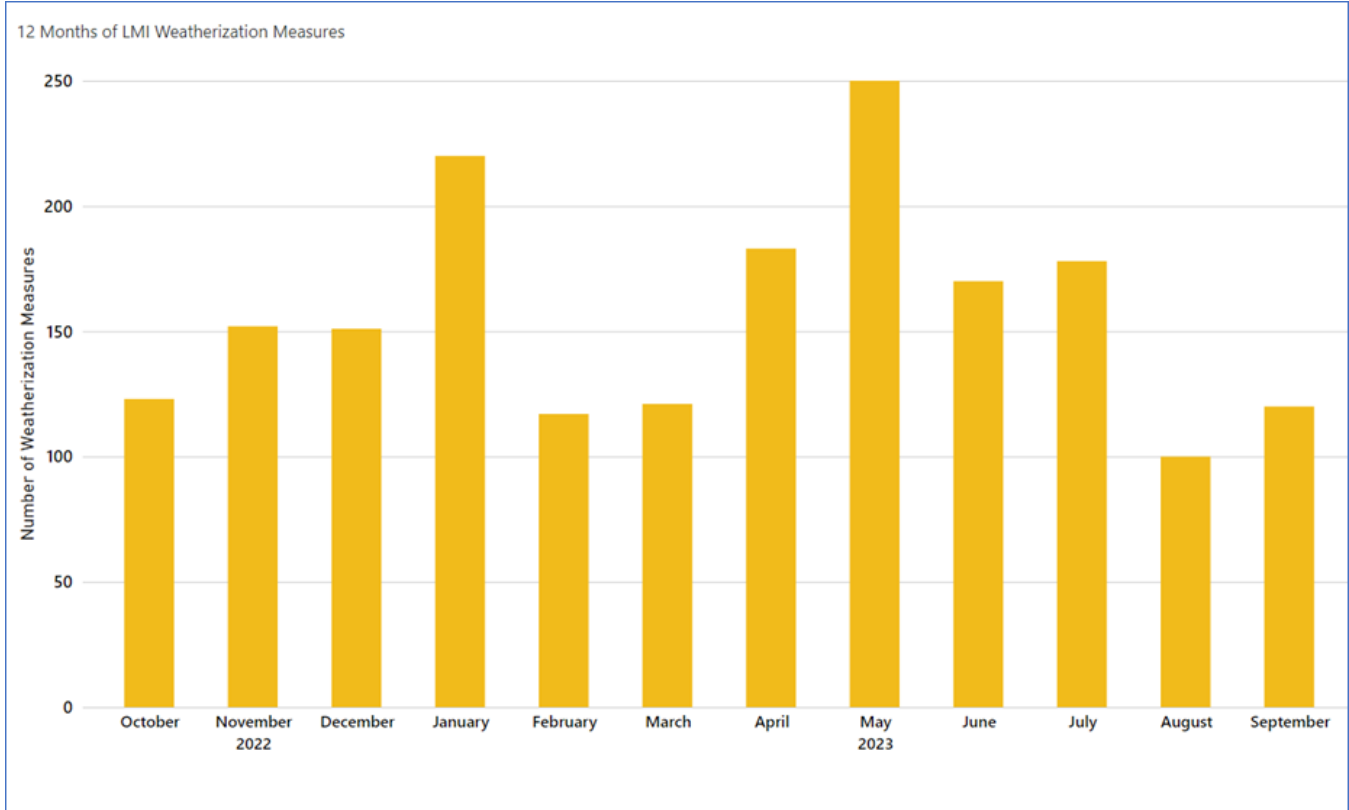
### 12 Months of Rebates for Low -and Moderate- Income Mainers



### 12 Months of LMI Heat Pumps



## 12 Months of LMI Weatherization Measures



## Rebates for Low- and Moderate-Income Mainers - Last 12 Months (DETAILS)

Year	2022			2023									Program Total	
	October	November	December	January	February	March	April	May	June	July	August	September		
-														
+	<b>Heat Pumps</b>	157	122	148	149	80	42	74	81	63	123	73	79	<b>1,191</b>
+	<b>LI Weatherization</b>	123	152	151	186	60	77	90	112	82	69	38	37	<b>1,177</b>
+	<b>Moderate Weatherization</b>				34	57	44	93	153	88	109	62	83	<b>723</b>
	<b>Total</b>	<b>280</b>	<b>274</b>	<b>299</b>	<b>369</b>	<b>197</b>	<b>163</b>	<b>257</b>	<b>346</b>	<b>233</b>	<b>301</b>	<b>173</b>	<b>199</b>	<b>3,091</b>