

Residential Registered Vendor Monthly Newsletter January 10, 2024 (corrected)



- 1) **Whole-Home Heat Pump Rebate Milestone** – Thank you for helping over 500 homeowners switch to whole-home heat pumps since the program launched this fall.
- 2) **Reminder: Insulation Rebates** – As a reminder, our insulation rebates are listed below. Federal tax credits are also available.
 - Low income homeowners: 80% of the project cost up to a \$8,000 rebate
 - Moderate Income homeowners: 60% of the project cost up to a \$6,000 rebate
 - Any Income: 40% of the project cost up to a \$4,000 rebate
- 3) **New Additions to the Claim Form for Whole-Home Heat Pump Rebates** – We've added two bullets on Whole-Home Heat Pump [claim form](#):
 - #14. Contractor has explained to the homeowner the maximum capacity of the heat pump at the low-end of its operating range, the expected temperatures for the home's location, and strategies for dealing with extreme temperature events.
 - #15. If there is risk of frozen pipes, homeowner understands it can be minimized with insulation, heat tape on at-risk pipes, or space heaters set to keep the temperature just above freezing.
- 4) **Electric Rates to Drop January 2024** – The [Governor's Energy Office](#) reports that typical Maine households will pay about \$32 less per month for electricity in 2024 thanks to new, lower rates.
- 5) **Tip from the Field** – Our inspectors found that RRVs that set clear expectations (installation duration, heating range, electric bill impact, start/finish date, etc.) tend to have higher customer satisfaction scores.
- 6) **Rebate Processing Tip** – To promote comfort during extreme cold weather, we're switching to a more conservative ASHRAE standard for whole-home heat pump design temperatures. The new temperatures will be 0 °F for Portland, negative 7 °F for Bangor, and negative 14 °F for Caribou. These are the temperatures that these towns have stayed above 99.6% of the time.

7) **Tool of the Month** – If customers are asking about how well heat pumps work in the cold, we've got a heat pump [cold climate customer testimonials](#) brochure you can share. It quotes one customer saying, "That's not a challenge for my heat pumps, which during the February cold snap kept me warm without backup even during -49 °F wind chill!". You can [download](#) this from efficiencymaine.com, call us at 866-376-2463, or [click here](#) to order free, professionally printed copies online.

8) **IRA Funding Plan Public Meeting**- On January 23, Efficiency Maine, the Governor's Energy Office, and MaineHousing will host a public meeting on Maine's draft plan for the use of federal funding for home energy rebates made available under the Inflation Reduction Act. More information is available [here](#).

9) **Heat Pump Installation Training Opportunities** – The following courses are being offered by Efficiency Maine Registered Trainers. [Click here](#) to apply for a scholarship covering 50% of the cost up to a \$500 scholarship per employee.

| Dates | Course Title | Location | Registration Information |
|-----------------------|---------------------|------------------------------------|----------------------------------------------|
| 1/8/2024 – 1/12/2024 | Heat Pump Installer | Kennebec Valley Community College | Click for course information |
| 2/19/2024 – 2/23/2024 | Heat Pump Installer | Maine Energy Marketers Association | Click for course information |
| 3/11/2024 – 3/15/2024 | Heat Pump Installer | Kennebec Valley Community College | Click for course information |
| 5/13/2024 – 5/17/2024 | Heat Pump Installer | Maine Energy Marketers Association | Click for course information |

10) **Weatherization Training Opportunities** – Build Green Maine is offering BPI training and testing classes. If interested, please follow this link to the [BPI course registration](#). You can request a scholarship by filling out our scholarship [form](#).

| Dates | Course Title | Location | Registration Information |
|-----------------------|-----------------------------------------------------------------|-------------------|----------------------------------------------|
| 2/12/2024 – 2/21/2024 | Building Analyst Technician Field Training and Testing (2 Days) | Build Green Maine | Click for course information |

11) Top Insulation Performers (past four months)

- Horizon Homes
- Evergreen Home Performance
- Seal It Insulation Systems

12) Top Heat Pump Performers (past four months)

- Dave's World
- Royal River Heat Pumps
- Northeast Heat Pumps

13) Top LMI Insulation Performers (past four months)

- Evergreen Home Performance
- New England Spray Foam Insulation
- Horizon Homes

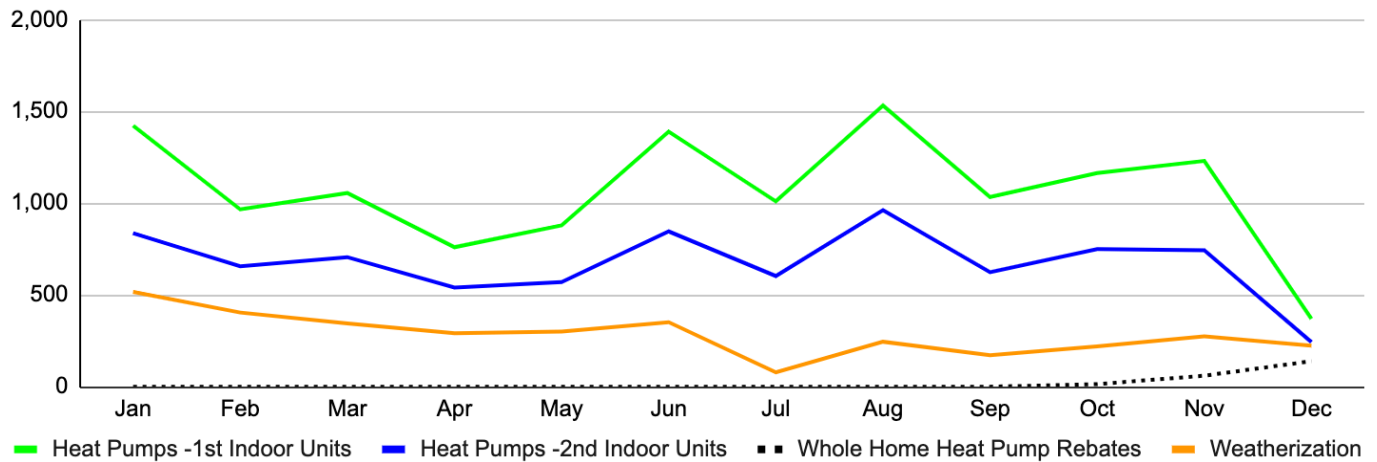
14) Top LMI Heat Pump Performers (past four months)

- Dave's World
- Valley Home Services
- Heat Pumps Of Maine

PROGRAM RESULTS

Home Energy Savings Program (HESP)

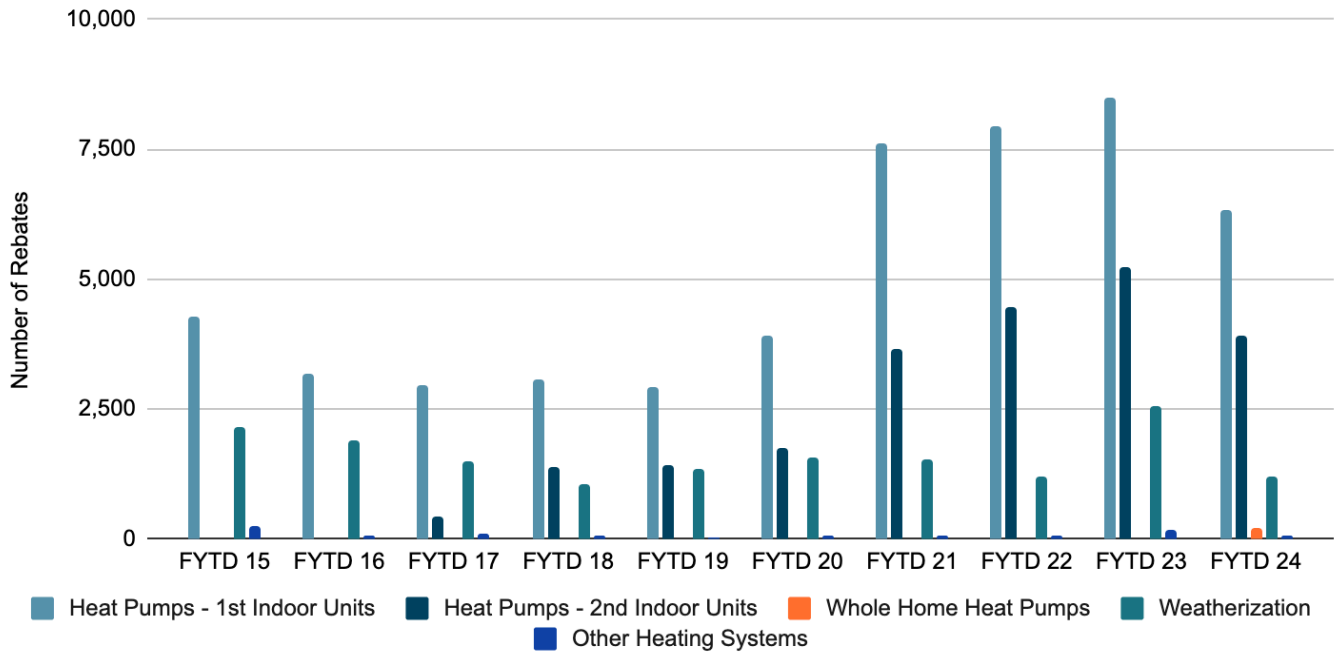
HESP Number of Rebates – Last 12 Months



HESP Number of Rebates – Last 12 Months (DETAILS)

| # | Rebate Type | 2023 | | | | | | | | | | | | Total |
|--------------|-------------------------------|--------------|--------------|--------------|--------------|--------------|--------------|--------------|--------------|--------------|--------------|--------------|------------|---------------|
| | | Jan | Feb | Mar | Apr | May | Jun | Jul | Aug | Sep | Oct | Nov | Dec | |
| 1 | Heat Pumps - 1st Indoor Units | 1,422 | 966 | 1,055 | 760 | 879 | 1,389 | 1,010 | 1,532 | 1,034 | 1,164 | 1,230 | 370 | 12,811 |
| 2 | Heat Pumps - 2nd Indoor Units | 836 | 656 | 706 | 540 | 570 | 846 | 603 | 962 | 624 | 750 | 743 | 243 | 8,079 |
| 3 | Whole Home Heat Pumps | 0 | 0 | 0 | 0 | 0 | 0 | 0 | 0 | 0 | 14 | 60 | 139 | 213 |
| 4 | Air Sealing | 133 | 109 | 101 | 92 | 92 | 100 | 0 | 42 | 10 | 4 | 1 | 2 | 686 |
| 5 | Attic Insulation | 161 | 129 | 124 | 93 | 122 | 121 | 39 | 96 | 71 | 99 | 120 | 103 | 1,278 |
| 6 | Basement Insulation | 165 | 122 | 88 | 83 | 58 | 89 | 32 | 74 | 59 | 86 | 109 | 85 | 1,050 |
| 7 | Wall Insulation | 58 | 44 | 32 | 23 | 29 | 41 | 7 | 33 | 31 | 31 | 44 | 34 | 407 |
| 8 | Geothermal HP | 7 | 5 | 3 | 3 | 1 | 3 | 0 | 1 | 1 | 4 | 1 | 4 | 33 |
| 9 | Pellet Boiler | 30 | 13 | 13 | 6 | 12 | 8 | 4 | 10 | 7 | 6 | 21 | 18 | 148 |
| Total | | 2,812 | 2,044 | 2,122 | 1,600 | 1,763 | 2,597 | 1,695 | 2,750 | 1,837 | 2,158 | 2,329 | 998 | 24,705 |

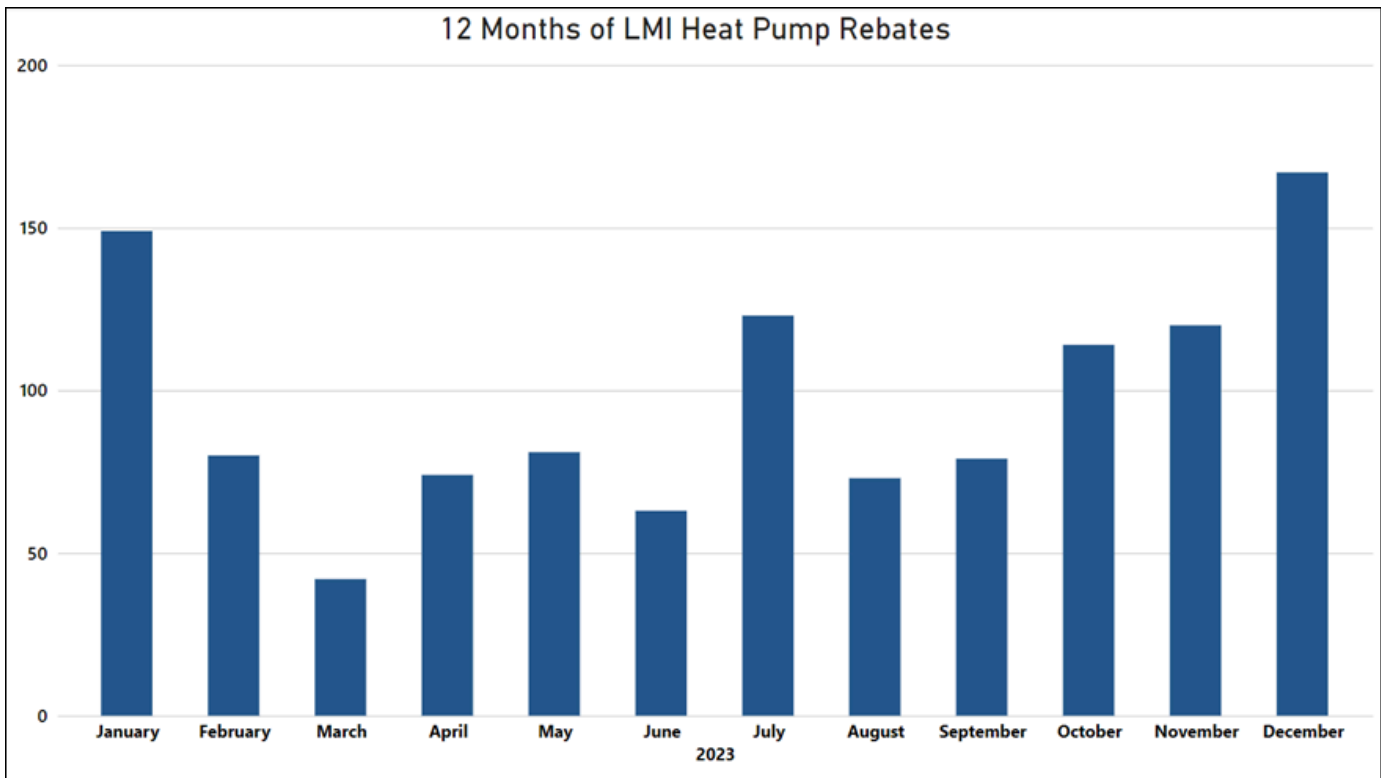
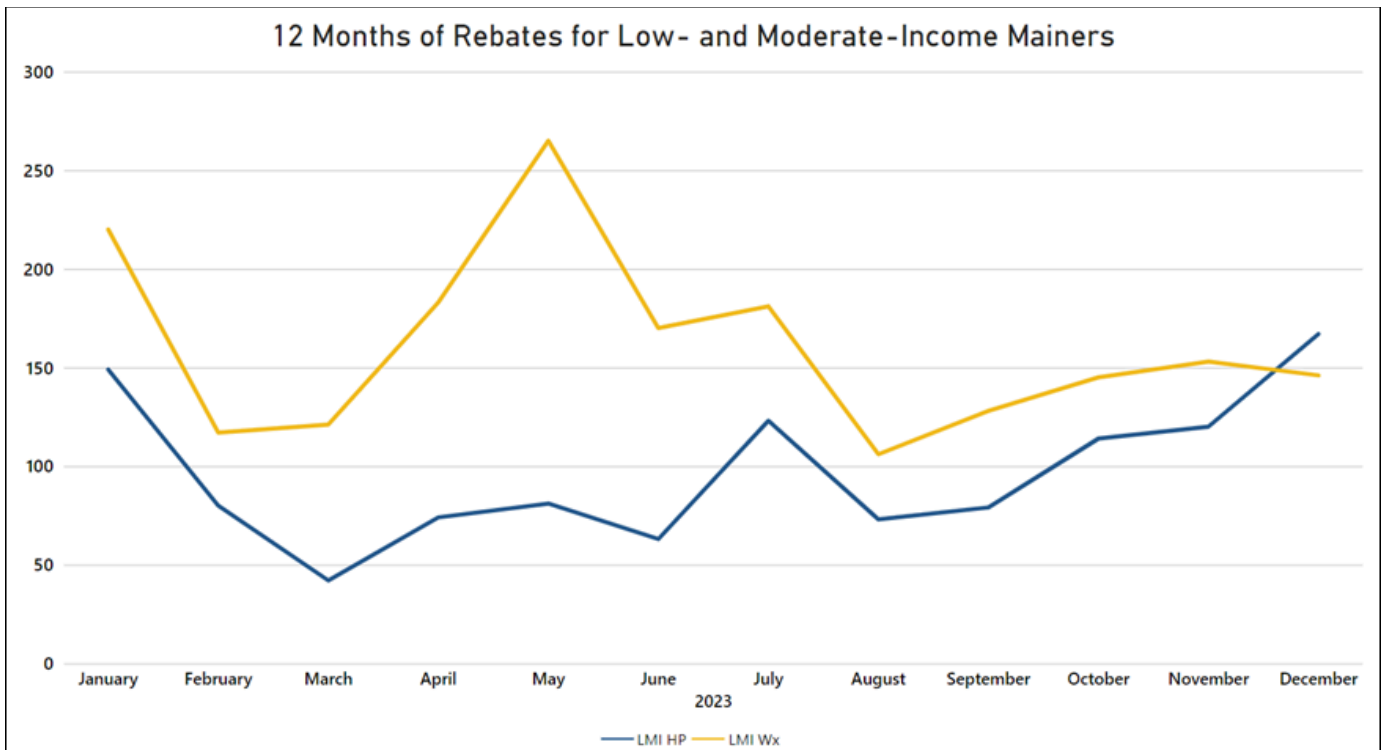
HESP Fiscal Year-to-Date Rebate Comparisons

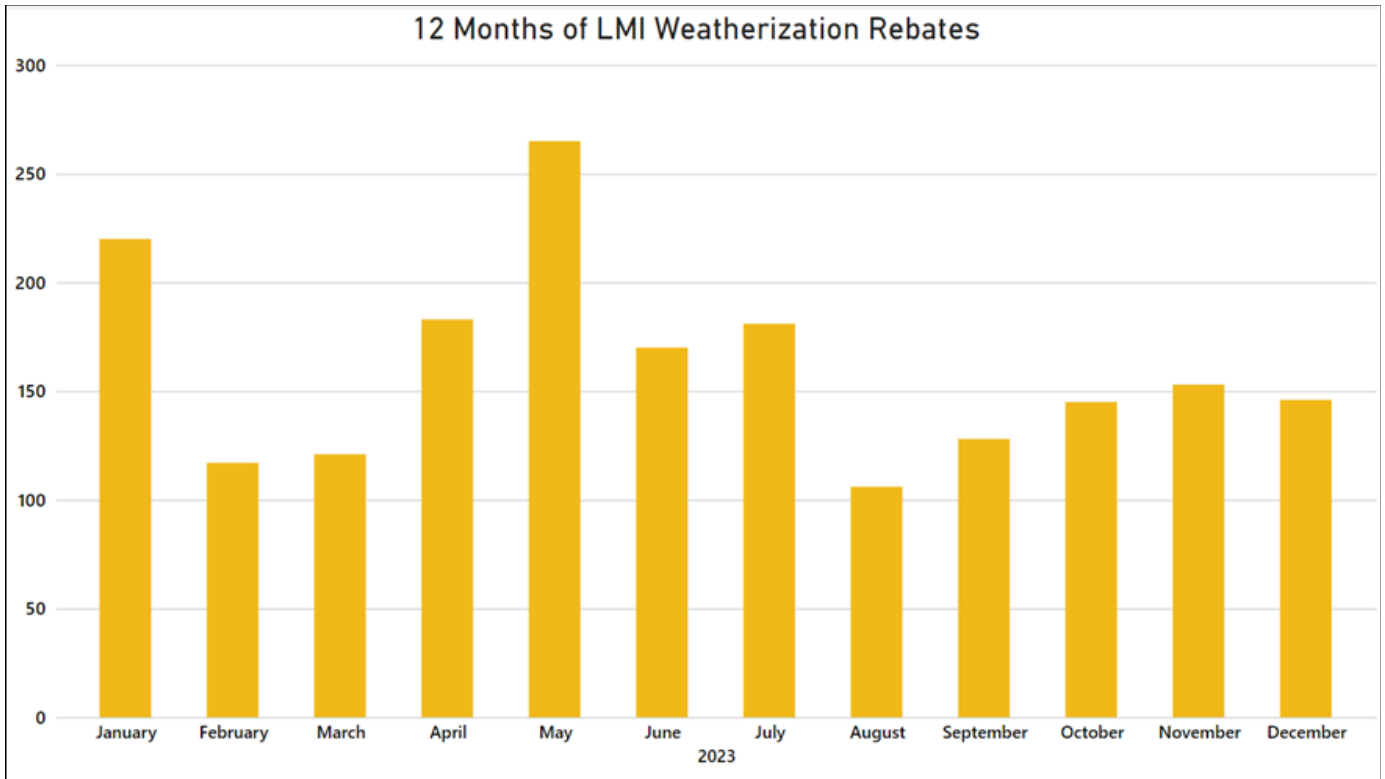


HESP Fiscal Year-to-Date Rebate Comparisons (DETAILS)

| # | Rebate Type | FYTD 15 | FYTD 16 | FYTD 17 | FYTD 18 | FYTD 19 | FYTD 20 | FYTD 21 | FYTD 22 | FYTD 23 | FYTD 24 |
|---------------------------------|-------------------------------|--------------|--------------|--------------|--------------|--------------|--------------|---------------|---------------|---------------|---------------|
| 1 | Heat Pumps - 1st Indoor Units | 4,277 | 3,184 | 2,945 | 3,058 | 2,910 | 3,903 | 7,624 | 7,925 | 8,486 | 6,340 |
| 2 | Heat Pumps - 2nd Indoor Units | 0 | 0 | 432 | 1,395 | 1,423 | 1,767 | 3,669 | 4,466 | 5,224 | 3,925 |
| 3 | Whole Home Heat Pumps | 0 | 0 | 0 | 0 | 0 | 0 | 0 | 0 | 0 | 213 |
| 4 | Air Sealing | 1,143 | 925 | 655 | 465 | 513 | 563 | 514 | 334 | 694 | 59 |
| 5 | Attic Insulation | 506 | 555 | 452 | 318 | 387 | 464 | 455 | 404 | 872 | 528 |
| 6 | Basement Insulation | 403 | 309 | 257 | 173 | 298 | 378 | 381 | 319 | 678 | 445 |
| 7 | Wall Insulation | 97 | 118 | 130 | 89 | 153 | 150 | 162 | 126 | 310 | 180 |
| 8 | Geothermal HP | 39 | 29 | 41 | 9 | 6 | 11 | 10 | 13 | 7 | 11 |
| 9 | Pellet Boiler | 201 | 50 | 48 | 37 | 22 | 35 | 41 | 55 | 150 | 66 |
| Total Measures Installed | | 6,666 | 5,170 | 4,960 | 5,544 | 5,712 | 7,271 | 12,856 | 13,642 | 16,421 | 11,767 |

Low-Income Program





Rebates for Low- and Moderate-Income Mainers - Last 12 Months

| Year | 2023 | | | | | | | | | | | | Program Total |
|----------------------------------|------------|------------|------------|------------|------------|------------|------------|------------|------------|------------|------------|------------|---------------|
| | January | February | March | April | May | June | July | August | September | October | November | December | |
| ☒ Heat Pumps | 149 | 80 | 42 | 74 | 81 | 63 | 123 | 73 | 79 | 114 | 120 | 167 | 1,165 |
| ☒ Low Income Weatherization | 186 | 60 | 77 | 90 | 112 | 82 | 72 | 41 | 39 | 44 | 58 | 44 | 905 |
| ☒ Moderate Income Weatherization | 34 | 57 | 44 | 93 | 153 | 88 | 109 | 65 | 89 | 101 | 95 | 102 | 1,030 |
| Total | 369 | 197 | 163 | 257 | 346 | 233 | 304 | 179 | 207 | 259 | 273 | 313 | 3,100 |